

## Anti-Creatine kinase B/CKB antibody (1-381aa) [AT8E4] (STJA0041800)

### GENERAL INFORMATION

Product Type	Primary antibodies
Applications	ELISA/WB/ICC/IF/FACS
Host / Source	Mouse
Reactivity	Human

### PRODUCT PROPERTIES

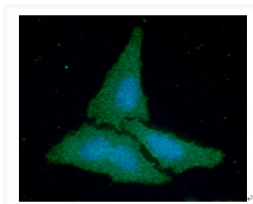
Clonality	Monoclonal
Concentration	1 mg/mL
Conjugation	Unconjugated
Purification	By protein-A affinity chromatography
Formulation	Liquid in phosphate-Buffered Saline (pH 7.4) with 0.02% Sodium Azide, 10% Glycerol
Isotype	IgG2ak
Storage Instruction	For short term storage, keep at +2C to +8C for up to 1 week. For long term storage, aliquot and store at -20C, and avoid repeat freeze-thaw cycles.

### TARGET INFORMATION

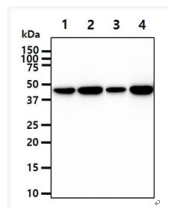
Gene ID	<a href="#">1152</a>
Gene Symbol	<a href="#">CKB</a>
UniProt ID	<a href="#">KCRB_HUMAN</a>
Immunogen Region	1-381aa

### ADDITIONAL INFORMATION

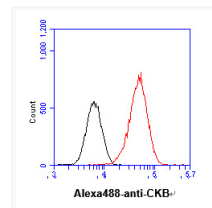
Note STRICTLY FOR FURTHER SCIENTIFIC RESEARCH USE ONLY (RUO). MUST NOT TO BE USED IN DIAGNOSTIC OR THERAPEUTIC APPLICATIONS.



ICC IF of CKB in HeLa cells with DAPI nuclear staining and Alexa Fluor 488 detection



Western blot of human CKB antibody showing protein detection in HeLa 293T K562 and LnCap cell lysates



Flow cytometry of CKB in HeLa cells using human creatine kinase B antibody with Alexa Fluor 488 detection