

Anti-Enolase 1/2 antibody (1-434aa) [AT1G7] (STJA0041798)

GENERAL INFORMATION

Product Type	Primary antibodies
Applications	ELISA/WB/ICC/IF/FACS
Host / Source	Mouse
Reactivity	Human

PRODUCT PROPERTIES

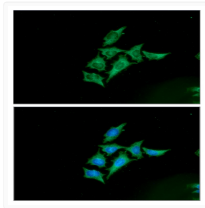
Clonality	Monoclonal
Concentration	1 mg/mL
Conjugation	Unconjugated
Purification	By protein-A affinity chromatography
Formulation	Liquid in phosphate-Buffered Saline (pH 7.4) with 0.02% Sodium Azide, 10% Glycerol
Isotype	IgG2ak
Storage Instruction	For short term storage, keep at +2C to +8C for up to 1 week. For long term storage, aliquot and store at -20C, and avoid repeat freeze-thaw cycles.

TARGET INFORMATION

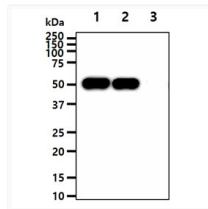
Gene ID	2023
Gene Symbol	ENO1
UniProt ID	ENOA_HUMAN
Immunogen Region	1-434aa

ADDITIONAL INFORMATION

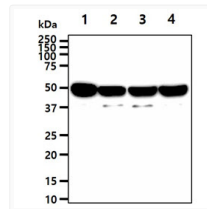
Note STRICTLY FOR FURTHER SCIENTIFIC RESEARCH USE ONLY (RUO). MUST NOT TO BE USED IN DIAGNOSTIC OR THERAPEUTIC APPLICATIONS.



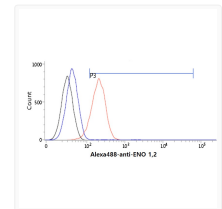
ICC IF of ENO1 2 in HeLa cells with STJA0041798 antibody Alexa Fluor 488 green DAPI blue



Western blot of Human Enolase 1 2 antibody detecting ENO1 ENO2 and ENO3 recombinant proteins



Western blot showing human Enolase 1 2 antibody detection in PC3 MCF7 293T and HeLa cell lysates



Flow cytometry of ENO1 2 in LNCap cells using STJA0041798 antibody with Alexa Fluor 488 detection