

Anti-GPD1L antibody (1-351aa) [AT14E2] (STJA0041789)

GENERAL INFORMATION

Product Type	Primary antibodies
Applications	ELISA/WB/ICC/IF
Host / Source	Mouse
Reactivity	Human

PRODUCT PROPERTIES

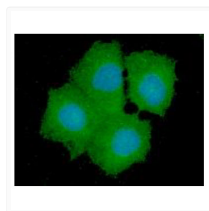
Clonality	Monoclonal
Concentration	1 mg/mL
Conjugation	Unconjugated
Purification	By protein-A affinity chromatography
Formulation	Liquid in phosphate-Buffered Saline (pH 7.4) with 0.02% Sodium Azide, 10% Glycerol
Isotype	IgG1k
Storage Instruction	For short term storage, keep at +2C to +8C for up to 1 week. For long term storage, aliquot and store at -20C, and avoid repeat freeze-thaw cycles.

TARGET INFORMATION

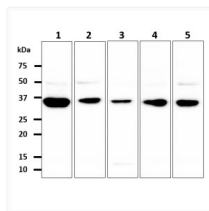
Gene ID	23171
Gene Symbol	GPD1L
UniProt ID	GPD1L_HUMAN
Immunogen Region	1-351aa

ADDITIONAL INFORMATION

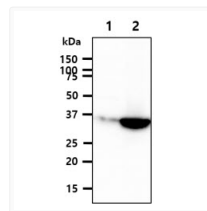
Note STRICTLY FOR FURTHER SCIENTIFIC RESEARCH USE ONLY (RUO). MUST NOT TO BE USED IN DIAGNOSTIC OR THERAPEUTIC APPLICATIONS.



ICC IF of GPD1L in Hep3B cells stained with DAPI and anti-GPD1L antibody with Alexa Fluor 488



Western blot of human GPD1L antibody in MCF7, 293T, Jurkat, SW480 and PC3 cell lysates



Western blot of human GPD1L antibody in 293T and GPD1L-transfected cell lysates