

## Anti-GPI antibody (1-558aa) [AT22G2] (STJA0041765)

### GENERAL INFORMATION

Product Type	Primary antibodies
Applications	ELISA/WB/FACS/ICC/IF
Host / Source	Mouse
Reactivity	Human

### PRODUCT PROPERTIES

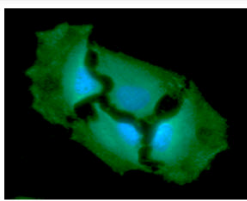
Clonality	Monoclonal
Concentration	1 mg/mL
Conjugation	Unconjugated
Purification	By protein-A affinity chromatography
Formulation	Liquid in phosphate-Buffered Saline (pH 7.4) with 0.02% Sodium Azide, 10% Glycerol
Isotype	IgG2ak
Storage Instruction	For short term storage, keep at +2C to +8C for up to 1 week. For long term storage, aliquot and store at -20C, and avoid repeat freeze-thaw cycles.

### TARGET INFORMATION

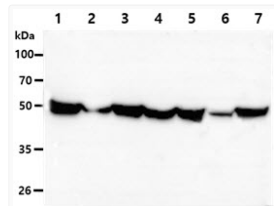
Gene ID	<a href="#">2821</a>
Gene Symbol	<a href="#">GPI</a>
UniProt ID	<a href="#">G6PI_HUMAN</a>
Immunogen Region	1-558aa

### ADDITIONAL INFORMATION

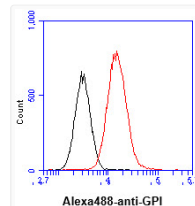
Note STRICTLY FOR FURTHER SCIENTIFIC RESEARCH USE ONLY (RUO). MUST NOT TO BE USED IN DIAGNOSTIC OR THERAPEUTIC APPLICATIONS.



ICC IF of human GPI in HeLa cells with DAPI and Alexa Fluor 488



Western blot of human GPI antibody STJA0041765 across seven cell lines using anti-mouse HRP detection



Flow cytometry of GPI in HeLa cells with human GPI antibody and goat anti-mouse IgG Alexa Fluor 488