

Anti-NUDT1/MTH1 antibody (1-156aa) [AT3B3] (STJA0041750)

GENERAL INFORMATION

Product Type	Primary antibodies
Applications	ELISA/WB/ICC/IF/FACS
Host / Source	Mouse
Reactivity	Human

PRODUCT PROPERTIES

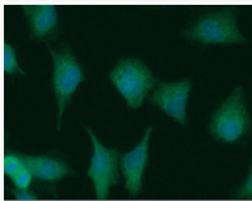
Clonality	Monoclonal
Concentration	1 mg/mL
Conjugation	Unconjugated
Purification	By protein-A affinity chromatography
Formulation	Liquid in phosphate-Buffered Saline (pH 7.4) with 0.02% Sodium Azide, 10% Glycerol
Isotype	IgG1k
Storage Instruction	For short term storage, keep at +2C to +8C for up to 1 week. For long term storage, aliquot and store at -20C, and avoid repeat freeze-thaw cycles.

TARGET INFORMATION

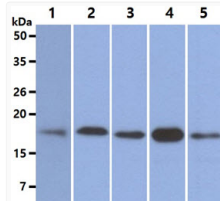
Gene ID	4521
Gene Symbol	NUDT1
UniProt ID	8ODP_HUMAN
Immunogen Region	1-156aa

ADDITIONAL INFORMATION

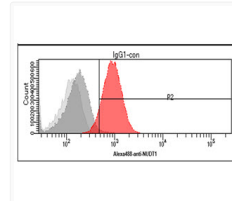
Note STRICTLY FOR FURTHER SCIENTIFIC RESEARCH USE ONLY (RUO). MUST NOT TO BE USED IN DIAGNOSTIC OR THERAPEUTIC APPLICATIONS.



ICC IF of NUDT1 MTH1 in A549 cells with Alexa Fluor 488 and DAPI staining



Western blot of human NUDT1 MTH1 protein expression in multiple cell lines



Flow cytometry of NUDT1 in Jurkat cells stained with STJA0041750 antibody