

Anti-Cyclin H antibody (1-323aa) [AT3G6] (STJA0041740)

GENERAL INFORMATION

Product Type	Primary antibodies
Applications	ELISA/WB
Host / Source	Mouse
Reactivity	Human

PRODUCT PROPERTIES

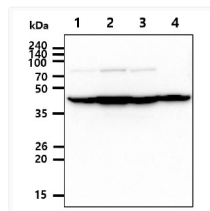
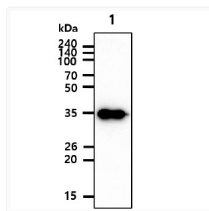
Clonality	Monoclonal
Concentration	1 mg/mL
Conjugation	Unconjugated
Purification	By protein-A affinity chromatography
Formulation	Liquid in phosphate-Buffered Saline (pH 7.4) with 0.02% Sodium Azide, 10% Glycerol
Isotype	IgG2bk
Storage Instruction	For short term storage, keep at +2C to +8C for up to 1 week. For long term storage, aliquot and store at -20C, and avoid repeat freeze-thaw cycles.

TARGET INFORMATION

Gene ID	902
Gene Symbol	CCNH
UniProt ID	CCNH_HUMAN
Immunogen Region	1-323aa

ADDITIONAL INFORMATION

Note STRICTLY FOR FURTHER SCIENTIFIC RESEARCH USE ONLY (RUO). MUST NOT TO BE USED IN DIAGNOSTIC OR THERAPEUTIC APPLICATIONS.



Western blot of recombinant human Cyclin H protein detected with anti-human Cyclin H antibody
Western blot of human Cyclin H antibody in HepG2 Jurkat Ramos and Balb-3T3 cell lysates