

Anti-Beclin 1/BECN1 antibody (1-450aa) [AT45E8] (STJA0041732)

GENERAL INFORMATION

Product Type	Primary antibodies
Applications	ELISA/WB/ICC/IF/FACS
Host / Source	Mouse
Reactivity	Human

PRODUCT PROPERTIES

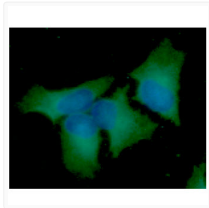
Clonality	Monoclonal
Concentration	1 mg/mL
Conjugation	Unconjugated
Purification	By protein-A affinity chromatography
Formulation	Liquid in phosphate-Buffered Saline (pH 7.4) with 0.02% Sodium Azide, 10% Glycerol
Isotype	IgG2bk
Storage Instruction	For short term storage, keep at +2C to +8C for up to 1 week. For long term storage, aliquot and store at-20C, and avoid repeat freeze-thaw cycles.

TARGET INFORMATION

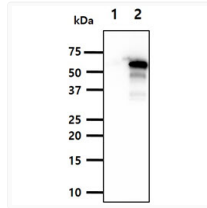
Gene ID	8678
Gene Symbol	BECN1
UniProt ID	BECN1_HUMAN
Immunogen Region	1-450aa

ADDITIONAL INFORMATION

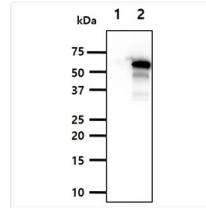
Note STRICTLY FOR FURTHER SCIENTIFIC RESEARCH USE ONLY (RUO). MUST NOT TO BE USED IN DIAGNOSTIC OR THERAPEUTIC APPLICATIONS.



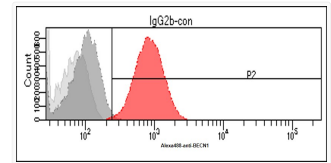
ICC IF of BECN1 in HeLa cells stained with STJA0041732 antibody, Alexa Fluor secondary and DAPI



Human Beclin 1 BECN1 antibody western blot showing 293T and transfected lysates



Human Beclin 1 BECN1 antibody western blot showing 293T and transfected lysates



Flow cytometry of BECN1 in HeLa cells stained with STJA0041732 antibody