

Anti-Cathepsin Z antibody (62-303aa) [AT6G11] (STJA0041690)

GENERAL INFORMATION

Product Type	Primary antibodies
Applications	ELISA/WB/ICC/IF
Host / Source	Mouse
Reactivity	Human

PRODUCT PROPERTIES

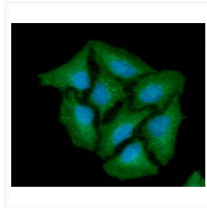
Clonality	Monoclonal
Concentration	1 mg/mL
Conjugation	Unconjugated
Purification	By protein-A affinity chromatography
Formulation	Liquid in phosphate-Buffered Saline (pH 7.4) with 0.02% Sodium Azide, 10% Glycerol
Isotype	IgG2bk
Storage Instruction	For short term storage, keep at +2C to +8C for up to 1 week. For long term storage, aliquot and store at -20C, and avoid repeat freeze-thaw cycles.

TARGET INFORMATION

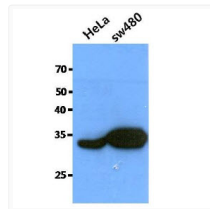
Gene ID	1522
Gene Symbol	CTSZ
UniProt ID	CATZ_HUMAN
Immunogen Region	62-303aa

ADDITIONAL INFORMATION

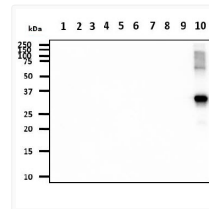
Note STRICTLY FOR FURTHER SCIENTIFIC RESEARCH USE ONLY (RUO). MUST NOT TO BE USED IN DIAGNOSTIC OR THERAPEUTIC APPLICATIONS.



ICC IF of CTSZ in HeLa cells with DAPI nuclear stain and anti-CTSZ antibody green fluorescence



Western blot of human Cathepsin Z in HeLa and SW480 cell lysates using STJA0041690 antibody



Western blot of Human Cathepsin Z antibody STJA0041690 showing specificity across cathepsin family proteins