

## Anti-Coactosin-like Protein 1/COTL1 antibody (1-142aa) [AT1D6] (STJA0041688)

### GENERAL INFORMATION

Product Type	Primary antibodies
Applications	ELISA/WB/FACS
Host / Source	Mouse
Reactivity	Human

### PRODUCT PROPERTIES

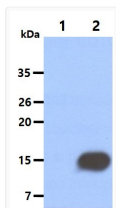
Clonality	Monoclonal
Concentration	1 mg/mL
Conjugation	Unconjugated
Purification	By protein-A affinity chromatography
Formulation	Liquid in phosphate-Buffered Saline (pH 7.4) with 0.02% Sodium Azide, 10% Glycerol
Isotype	IgG2bk
Storage Instruction	For short term storage, keep at +2C to +8C for up to 1 week. For long term storage, aliquot and store at -20C, and avoid repeat freeze-thaw cycles.

### TARGET INFORMATION

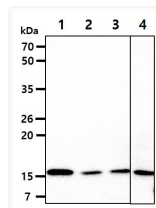
Gene ID	<a href="#">23406</a>
Gene Symbol	<a href="#">COTL1</a>
UniProt ID	<a href="#">COTL1_HUMAN</a>
Immunogen Region	1-142aa

### ADDITIONAL INFORMATION

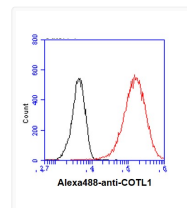
Note STRICTLY FOR FURTHER SCIENTIFIC RESEARCH USE ONLY (RUO). MUST NOT TO BE USED IN DIAGNOSTIC OR THERAPEUTIC APPLICATIONS.



Western blot of COTL1 protein in 293T cell lysates using anti-human COTL1 antibody



Western blot of human COTL1 antibody showing protein expression in PC3 A549 U87MG and HeLa cell lysates



Flow cytometry of COTL1 in HeLa cells with Alexa Fluor 488 detection