

Anti-Enolase 2/ENO2 antibody (1-434aa) [AT17D10] (STJA0041667)

GENERAL INFORMATION

Product Type	Primary antibodies
Applications	ELISA/WB/ICC/IF
Host / Source	Mouse
Reactivity	Human

PRODUCT PROPERTIES

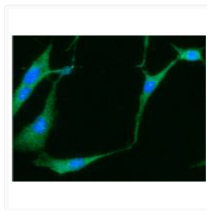
Clonality	Monoclonal
Concentration	1 mg/mL
Conjugation	Unconjugated
Purification	By protein-A affinity chromatography
Formulation	Liquid in phosphate-Buffered Saline (pH 7.4) with 0.02% Sodium Azide, 10% Glycerol
Isotype	IgG2bk
Storage Instruction	For short term storage, keep at +2C to +8C for up to 1 week. For long term storage, aliquot and store at -20C, and avoid repeat freeze-thaw cycles.

TARGET INFORMATION

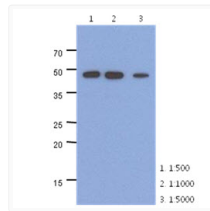
Gene ID	2026
Gene Symbol	ENO2
UniProt ID	ENOG_HUMAN
Immunogen Region	1-434aa

ADDITIONAL INFORMATION

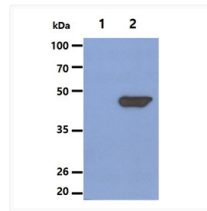
Note **STRICTLY FOR FURTHER SCIENTIFIC RESEARCH USE ONLY (RUO). MUST NOT TO BE USED IN DIAGNOSTIC OR THERAPEUTIC APPLICATIONS.**



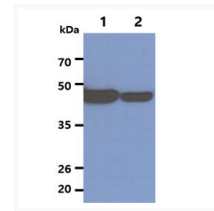
ICC IF of ENO2 NSE in U87MG cells with DAPI and Alexa Fluor 488 staining



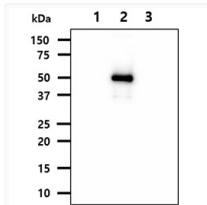
Western blot showing Human Enolase 2 ENO2 detection in mouse brain extract using anti-human NSE antibody



Western blot of human Enolase 2 ENO2 antibody detection in 293T and NSE-transfected lysates



Western blot of Human Enolase 2 ENO2 in U-87 MG and Jurkat cell lysates



Western blot of recombinant ENO1 NSE ENO2 and ENO3 proteins probed with anti-human NSE antibody