

## Anti-ICT1 antibody (30-206aa) [AT1E9] (STJA0041659)

### GENERAL INFORMATION

Product Type	Primary antibodies
Applications	ELISA/WB/FACS
Host / Source	Mouse
Reactivity	Human

### PRODUCT PROPERTIES

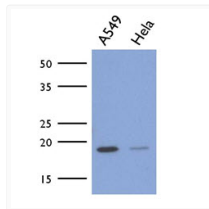
Clonality	Monoclonal
Concentration	1 mg/mL
Conjugation	Unconjugated
Purification	By protein-A affinity chromatography
Formulation	Liquid in phosphate-Buffered Saline (pH 7.4) with 0.02% Sodium Azide, 10% Glycerol
Isotype	IgG1k
Storage Instruction	For short term storage, keep at +2C to +8C for up to 1 week. For long term storage, aliquot and store at -20C, and avoid repeat freeze-thaw cycles.

### TARGET INFORMATION

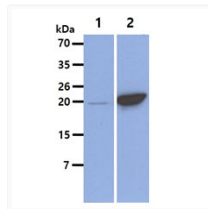
Gene ID	<a href="#">3396</a>
Gene Symbol	<a href="#">MRPL58</a>
UniProt ID	<a href="#">ICT1_HUMAN</a>
Immunogen Region	30-206aa

### ADDITIONAL INFORMATION

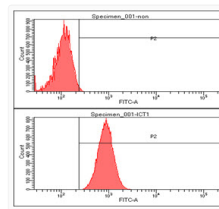
Note **STRICTLY FOR FURTHER SCIENTIFIC RESEARCH USE ONLY (RUO). MUST NOT TO BE USED IN DIAGNOSTIC OR THERAPEUTIC APPLICATIONS.**



Western blot of human ICT1 protein using STJA0041659 antibody



Western blot of human ICT1 antibody showing 293T and ICT1-transfected 293T cell lysates



Flow cytometry of ICT1 in A549 cells with goat anti-mouse IgG Alexa Fluor 488