

Anti-Keratin 8/KRT8 antibody (1-483aa) [AT3D11] (STJA0041651)

GENERAL INFORMATION

Product Type	Primary antibodies
Applications	ELISA/WB/ICC/IF/FACS
Host / Source	Mouse
Reactivity	Human

PRODUCT PROPERTIES

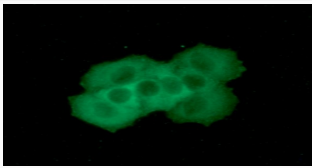
Clonality	Monoclonal
Concentration	1 mg/mL
Conjugation	Unconjugated
Purification	By protein-A affinity chromatography
Formulation	Liquid in phosphate-Buffered Saline (pH 7.4) with 0.02% Sodium Azide, 10% Glycerol
Isotype	IgG3k
Storage Instruction	For short term storage, keep at +2C to +8C for up to 1 week. For long term storage, aliquot and store at -20C, and avoid repeat freeze-thaw cycles.

TARGET INFORMATION

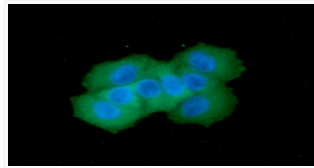
Gene ID	3856
Gene Symbol	KRT8
UniProt ID	K2C8_HUMAN
Immunogen Region	1-483aa

ADDITIONAL INFORMATION

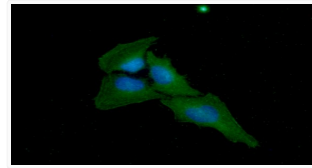
Note STRICTLY FOR FURTHER SCIENTIFIC RESEARCH USE ONLY (RUO). MUST NOT TO BE USED IN DIAGNOSTIC OR THERAPEUTIC APPLICATIONS.



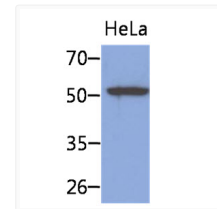
ICC IF of KRT8 in MCF7 cells with DAPI and Alexa Fluor 488 staining



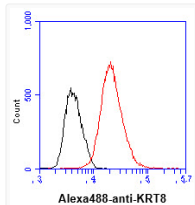
Western blot of Human Keratin 8 KRT8 antibody STJA0041651 showing protein detection



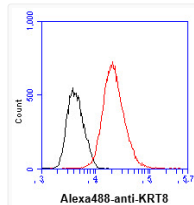
ICC IF of KRT8 in HeLa cells with DAPI and Alexa Fluor 488 staining



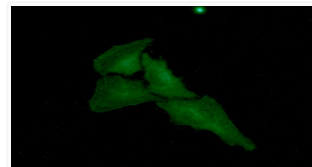
Flow cytometry of Human Keratin 8 KRT8 antibody STJA0041651 showing cell population gating



Western blot of human KRT8 antibody showing LnCap PC3 MCF7 and A549 cell lysates



Western blot of human KRT8 antibody showing LnCap PC3 MCF7 and A549 cell lysates



Flow cytometry of KRT8 in MCF7 cells with goat anti-mouse IgG Alexa Fluor 488