

## Anti-CISD1 antibody (32-108aa) [AT1A8] (STJA0041642)

### GENERAL INFORMATION

Product Type	Primary antibodies
Applications	ELISA/WB/FACS
Host / Source	Mouse
Reactivity	Human

### PRODUCT PROPERTIES

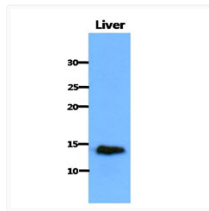
Clonality	Monoclonal
Concentration	1 mg/mL
Conjugation	Unconjugated
Purification	By protein-A affinity chromatography
Formulation	Liquid in phosphate-Buffered Saline (pH 7.4) with 0.02% Sodium Azide, 10% Glycerol
Isotype	IgG1k
Storage Instruction	For short term storage, keep at +2C to +8C for up to 1 week. For long term storage, aliquot and store at -20C, and avoid repeat freeze-thaw cycles.

### TARGET INFORMATION

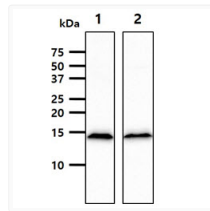
Gene ID	<a href="#">55847</a>
Gene Symbol	<a href="#">CISD1</a>
UniProt ID	<a href="#">CISD1_HUMAN</a>
Immunogen Region	32-108aa

### ADDITIONAL INFORMATION

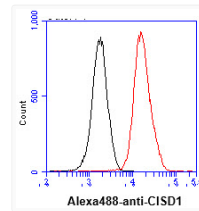
Note STRICTLY FOR FURTHER SCIENTIFIC RESEARCH USE ONLY (RUO). MUST NOT TO BE USED IN DIAGNOSTIC OR THERAPEUTIC APPLICATIONS.



Western blot of human CISD1 antibody on mouse liver tissue lysate with HRP detection



Western blot of human CISD1 antibody on K562 and MCF7 cell lysates using HRP detection



Flow cytometry of CISD1 in THP-1 cells with goat anti-mouse IgG Alexa Fluor 488