

Anti-GIPC1/2 antibody (1-315aa) [AT1G10] (STJA0041623)

GENERAL INFORMATION

Product Type	Primary antibodies
Applications	ELISA/WB/FACS
Host / Source	Mouse
Reactivity	Human

PRODUCT PROPERTIES

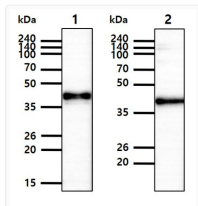
Clonality	Monoclonal
Concentration	1 mg/mL
Conjugation	Unconjugated
Purification	By protein-G affinity chromatography
Formulation	Liquid in phosphate-Buffered Saline (pH 7.4) with 0.02% Sodium Azide, 10% Glycerol
Isotype	IgG1k
Storage Instruction	For short term storage, keep at +2C to +8C for up to 1 week. For long term storage, aliquot and store at -20C, and avoid repeat freeze-thaw cycles.

TARGET INFORMATION

Gene ID	54810
Gene Symbol	GIPC2
UniProt ID	GIPC2_HUMAN
Immunogen Region	1-315aa

ADDITIONAL INFORMATION

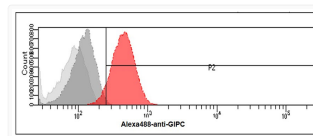
Note STRICTLY FOR FURTHER SCIENTIFIC RESEARCH USE ONLY (RUO). MUST NOT TO BE USED IN DIAGNOSTIC OR THERAPEUTIC APPLICATIONS.



Western blot of GIPC1 and GIPC2 recombinant proteins using human GIPC1 2 antibody



Western blot of human GIPC1 2 antibody showing 293T HepG2 and HeLa cell lysates



Flow cytometry of GIPC in HeLa cells using STJA0041623 antibody with Alexa Fluor 488 detection