

## Anti-PKLR antibody (47-574aa) [AT1E3] (STJA0041611)

### GENERAL INFORMATION

Product Type	Primary antibodies
Applications	ELISA/WB/ICC/IF
Host / Source	Mouse
Reactivity	Human

### PRODUCT PROPERTIES

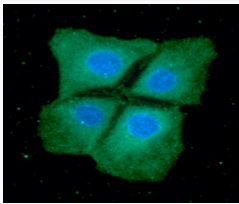
Clonality	Monoclonal
Concentration	1 mg/mL
Conjugation	Unconjugated
Purification	By protein-G affinity chromatography
Formulation	Liquid in phosphate-Buffered Saline (pH 7.4) with 0.02% Sodium Azide, 10% Glycerol
Isotype	IgG1k
Storage Instruction	For short term storage, keep at +2C to +8C for up to 1 week. For long term storage, aliquot and store at -20C, and avoid repeat freeze-thaw cycles.

### TARGET INFORMATION

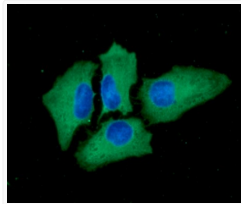
Gene ID	<a href="#">5313</a>
Gene Symbol	<a href="#">PKLR</a>
UniProt ID	<a href="#">KPYP_HUMAN</a>
Immunogen Region	47-574aa

### ADDITIONAL INFORMATION

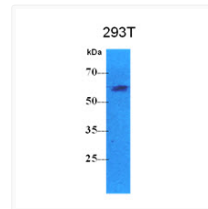
Note STRICTLY FOR FURTHER SCIENTIFIC RESEARCH USE ONLY (RUO). MUST NOT TO BE USED IN DIAGNOSTIC OR THERAPEUTIC APPLICATIONS.



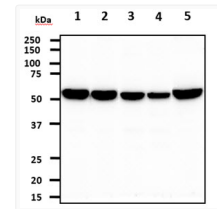
ICC IF of PKLR in Hep3B cells stained with STJA0041611 antibody Alexa Fluor secondary DAPI nucleus



ICC IF of PKLR in HeLa cells stained with STJA0041611 antibody and Alexa Fluor 488



Western blot of human PKLR protein in 293T cell lysate using anti-PKLR antibody



Western blot of human PKLR antibody STJA0041611 across multiple cell lines