

## Anti-CtBP1 antibody (1-440aa) [AT4D6] (STJA0041602)

### GENERAL INFORMATION

Product Type	Primary antibodies
Applications	ELISA/WB/ICC/IF
Host / Source	Mouse
Reactivity	Human

### PRODUCT PROPERTIES

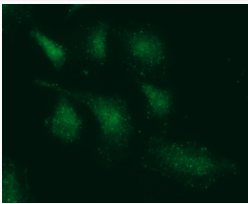
Clonality	Monoclonal
Concentration	1 mg/mL
Conjugation	Unconjugated
Purification	By protein-G affinity chromatography
Formulation	Liquid in phosphate-Buffered Saline (pH 7.4) with 0.02% Sodium Azide, 10% Glycerol
Isotype	IgG2bk
Storage Instruction	For short term storage, keep at +2C to +8C for up to 1 week. For long term storage, aliquot and store at -20C, and avoid repeat freeze-thaw cycles.

### TARGET INFORMATION

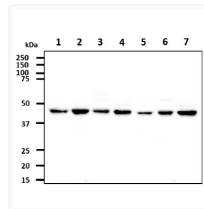
Gene ID	<a href="#">1487</a>
Gene Symbol	<a href="#">CTBP1</a>
UniProt ID	<a href="#">CTBP1_HUMAN</a>
Immunogen Region	1-440aa

### ADDITIONAL INFORMATION

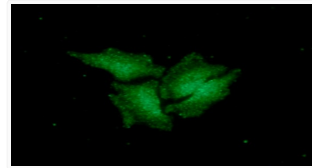
Note STRICTLY FOR FURTHER SCIENTIFIC RESEARCH USE ONLY (RUO). MUST NOT TO BE USED IN DIAGNOSTIC OR THERAPEUTIC APPLICATIONS.



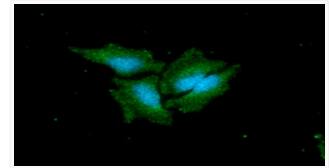
ICC IF of CTBP1 in A549 cells with DAPI and Alexa Fluor 488 staining



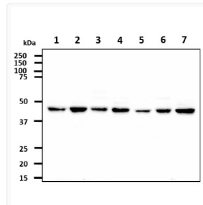
Western blot of human CtBP1 antibody STJA0041602 across multiple cell lysates



ICC IF of CTBP1 in HeLa cells with DAPI and Alexa Fluor 488 staining



Western blot of Human CtBP1 antibody STJA0041602 showing protein detection



Western blot of human CtBP1 antibody STJA0041602 across multiple cell lysates