

## Anti-ERK1/MAPK3 antibody (1-137aa) [AT1A2] (STJA0041595)

### GENERAL INFORMATION

Product Type	Primary antibodies
Applications	ELISA/WB/ICC/IF
Host / Source	Mouse
Reactivity	Human

### PRODUCT PROPERTIES

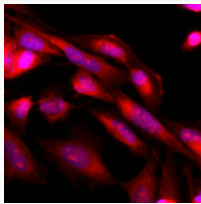
Clonality	Monoclonal
Concentration	1 mg/mL
Conjugation	Unconjugated
Purification	By protein-G affinity chromatography
Formulation	Liquid in phosphate-Buffered Saline (pH 7.4) with 0.02% Sodium Azide, 10% Glycerol
Isotype	IgG2bk
Storage Instruction	For short term storage, keep at +2C to +8C for up to 1 week. For long term storage, aliquot and store at -20C, and avoid repeat freeze-thaw cycles.

### TARGET INFORMATION

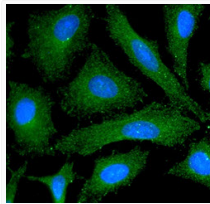
Gene ID	<a href="#">5595</a>
Gene Symbol	<a href="#">MAPK3</a>
UniProt ID	<a href="#">MK03_HUMAN</a>
Immunogen Region	1-137aa

### ADDITIONAL INFORMATION

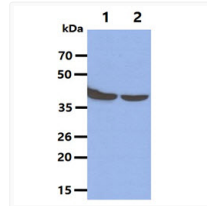
Note STRICTLY FOR FURTHER SCIENTIFIC RESEARCH USE ONLY (RUO). MUST NOT TO BE USED IN DIAGNOSTIC OR THERAPEUTIC APPLICATIONS.



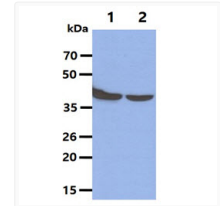
ICC IF of MAPK3 in HeLa cells with Hoechst 33342 nuclear stain and anti-MAPK3 antibody



ICC IF of MAPK3 in HeLa cells with DAPI and anti-MAPK3 antibody staining



Western blot showing ERK1 MAPK3 protein detection in 293T cell lysates using anti-human MAPK3 antibody



Western blot showing ERK1 MAPK3 protein detection in 293T cell lysates using anti-human MAPK3 antibody