

## Anti-SUMO 2/3 antibody (1-93aa) [AT10F1] (STJA0041591)

### GENERAL INFORMATION

Product Type	Primary antibodies
Applications	ELISA/WB/ICC/IF/IHC/FACS
Host / Source	Mouse
Reactivity	Human

### PRODUCT PROPERTIES

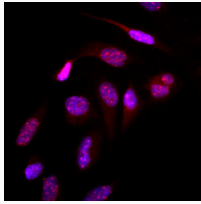
Clonality	Monoclonal
Concentration	1 mg/mL
Conjugation	Unconjugated
Purification	By protein-G affinity chromatography
Formulation	Liquid in phosphate-Buffered Saline (pH 7.4) with 0.02% Sodium Azide, 10% Glycerol
Isotype	IgG2bk
Storage Instruction	For short term storage, keep at +2C to +8C for up to 1 week. For long term storage, aliquot and store at-20C, and avoid repeat freeze-thaw cycles.

### TARGET INFORMATION

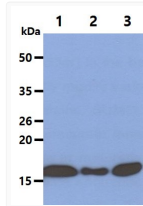
Gene ID	<a href="#">6613</a>
Gene Symbol	<a href="#">SUMO2</a>
UniProt ID	<a href="#">SUMO2_HUMAN</a>
Immunogen Region	1-93aa

### ADDITIONAL INFORMATION

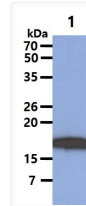
Note STRICTLY FOR FURTHER SCIENTIFIC RESEARCH USE ONLY (RUO). MUST NOT TO BE USED IN DIAGNOSTIC OR THERAPEUTIC APPLICATIONS.



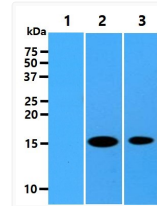
Immunofluorescence of human HeLa cells stained with anti-SUMO 2/3 antibody and Hoechst 33342



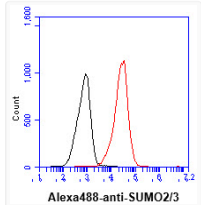
Western blot of human SUMO 2/3 antibody showing HeLa Jurkat and K562 cell lysates



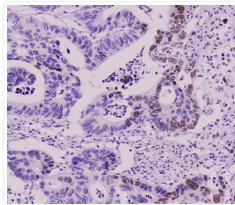
Western blot of human SUMO 2/3 antibody showing HL-60 cell lysate protein detection



Western blot of recombinant SUMO proteins probed with anti-human SUMO2/3 antibody



Flow cytometry of SUMO2/3 in Jurkat cells with goat anti-mouse IgG Alexa Fluor 488



IHC staining of human SUMO 2/3 in paraffin-embedded colorectal cancer tissue sections