

Anti-MINCLE/CLEC4E antibody (41-219aa) [AT16E3] (STJA0041584)

GENERAL INFORMATION

Product Type	Primary antibodies
Applications	ELISA/WB/ICC/IF/IHC/FACS
Host / Source	Mouse
Reactivity	Human

PRODUCT PROPERTIES

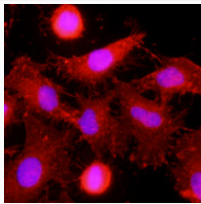
Clonality	Monoclonal
Concentration	1 mg/mL
Conjugation	Unconjugated
Purification	By protein-G affinity chromatography
Formulation	Liquid in phosphate-Buffered Saline (pH 7.4) with 0.02% Sodium Azide, 10% Glycerol
Isotype	IgG2bk
Storage Instruction	For short term storage, keep at +2C to +8C for up to 1 week. For long term storage, aliquot and store at -20C, and avoid repeat freeze-thaw cycles.

TARGET INFORMATION

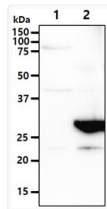
Gene ID	26253
Gene Symbol	CLEC4E
UniProt ID	CLC4E_HUMAN
Immunogen Region	41-219aa

ADDITIONAL INFORMATION

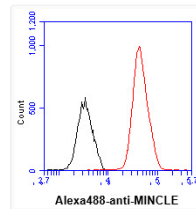
Note STRICTLY FOR FURTHER SCIENTIFIC RESEARCH USE ONLY (RUO). MUST NOT TO BE USED IN DIAGNOSTIC OR THERAPEUTIC APPLICATIONS.



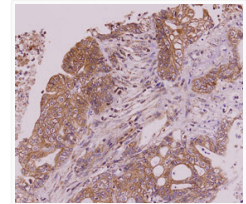
Immunofluorescence of human HeLa cells stained with anti-CLEC4E antibody and Hoechst nuclear stain



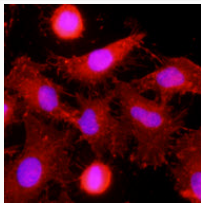
Western blot of human MINCLE CLEC4E antibody in 293T cell lysates



Flow cytometry of CLEC4E in LNCap cells with MINCLE antibody staining and isotype control



Human MINCLE CLEC4E antibody IHC staining in paraffin-embedded colorectal cancer tissue



Human MINCLE CLEC4E antibody immunohistochemistry staining pattern
STJA0041584