

## Anti-LITAF antibody (1-161aa) [AT1F9] (STJA0041569)

### GENERAL INFORMATION

Product Type	Primary antibodies
Applications	ELISA/WB/ICC/IF
Host / Source	Mouse
Reactivity	Human

### PRODUCT PROPERTIES

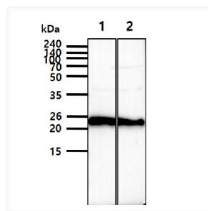
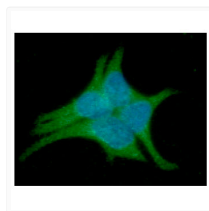
Clonality	Monoclonal
Concentration	1 mg/mL
Conjugation	Unconjugated
Purification	By protein-G affinity chromatography
Formulation	Liquid in phosphate-Buffered Saline (pH 7.4) with 0.02% Sodium Azide, 10% Glycerol
Isotype	IgG2bk
Storage Instruction	For short term storage, keep at +2C to +8C for up to 1 week. For long term storage, aliquot and store at -20C, and avoid repeat freeze-thaw cycles.

### TARGET INFORMATION

Gene ID	<a href="#">9516</a>
Gene Symbol	<a href="#">LITAF</a>
UniProt ID	<a href="#">LITAF_HUMAN</a>
Immunogen Region	1-161aa

### ADDITIONAL INFORMATION

Note STRICTLY FOR FURTHER SCIENTIFIC RESEARCH USE ONLY (RUO). MUST NOT TO BE USED IN DIAGNOSTIC OR THERAPEUTIC APPLICATIONS.



ICC IF of LITAF in LnCap cells stained with secondary DAPI nucleus  
STJA0041569 antibody Alexa Fluor 488

Western blot of human LITAF antibody in HeLa and HepG2 cell lysates