

Anti-MYL2 antibody (1-166aa) [AT3B2] (STJA0041568)

GENERAL INFORMATION

Product Type	Primary antibodies
Applications	ELISA/WB/ICC/IF/FACS
Host / Source	Mouse
Reactivity	Human

PRODUCT PROPERTIES

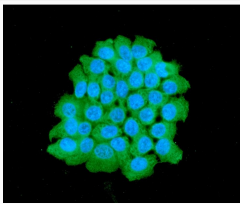
Clonality	Monoclonal
Concentration	1 mg/mL
Conjugation	Unconjugated
Purification	By protein-A affinity chromatography
Formulation	Liquid in phosphate-Buffered Saline (pH 7.4) with 0.02% Sodium Azide, 10% Glycerol
Isotype	IgG2bk
Storage Instruction	For short term storage, keep at +2C to +8C for up to 1 week. For long term storage, aliquot and store at -20C, and avoid repeat freeze-thaw cycles.

TARGET INFORMATION

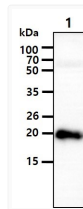
Gene ID	4633
Gene Symbol	MYL2
UniProt ID	MLRV_HUMAN
Immunogen Region	1-166aa

ADDITIONAL INFORMATION

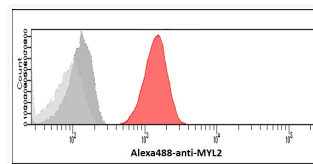
Note STRICTLY FOR FURTHER SCIENTIFIC RESEARCH USE ONLY (RUO). MUST NOT TO BE USED IN DIAGNOSTIC OR THERAPEUTIC APPLICATIONS.



ICC IF of MYL2 in A431 cells stained with STJA0041568 antibody (Alexa Fluor secondary antibody) and DAPI nuclear stain



Western blot of human MYL2 antibody detection in mouse heart tissue lysate



Flow cytometry of MYL2 in A431 cells stained with STJA0041568 antibody