

Anti-OSTF1 antibody (1-217aa) [AT9G4] (STJA0041549)

GENERAL INFORMATION

Product Type	Primary antibodies
Applications	ELISA/WB/ICC/IF/FACS
Host / Source	Mouse
Reactivity	Human

PRODUCT PROPERTIES

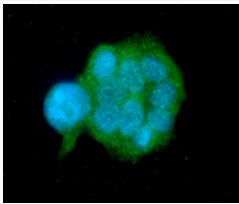
Clonality	Monoclonal
Concentration	1 mg/mL
Conjugation	Unconjugated
Purification	By protein-G affinity chromatography
Formulation	Liquid in phosphate-Buffered Saline (pH 7.4) with 0.02% Sodium Azide, 10% Glycerol
Isotype	IgG2ak
Storage Instruction	For short term storage, keep at +2C to +8C for up to 1 week. For long term storage, aliquot and store at -20C, and avoid repeat freeze-thaw cycles.

TARGET INFORMATION

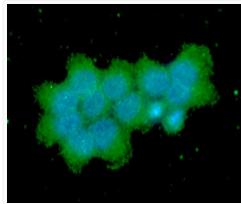
Gene ID	26578
Gene Symbol	OSTF1
UniProt ID	OSTF1_HUMAN
Immunogen Region	1-217aa

ADDITIONAL INFORMATION

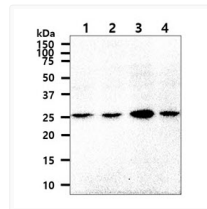
Note STRICTLY FOR FURTHER SCIENTIFIC RESEARCH USE ONLY (RUO). MUST NOT TO BE USED IN DIAGNOSTIC OR THERAPEUTIC APPLICATIONS.



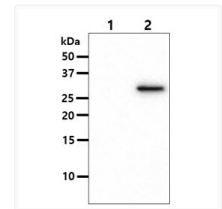
ICC IF of OSTF1 in MCF7 cells stained with STJA0041549 antibody



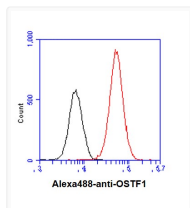
ICC IF of OSTF1 in A431 cells with STJA0041549 antibody and Alexa Fluor 488 staining



Western blot of human OSTF1 antibody showing protein expression in HepG2, MCF7, Jurkat and LnCap cell lysates



Western blot of human OSTF1 antibody showing protein expression in 293T cell lysate and OSTF1 transfected lysate



Flow cytometry of OSTF1 in HeLa cells using Human OSTF1 antibody with Alexa Fluor 488 detection