

## Anti-IL-6 antibody (30-212aa) [AT1H6] (STJA0041547)

### GENERAL INFORMATION

|               |                      |
|---------------|----------------------|
| Product Type  | Primary antibodies   |
| Applications  | ELISA/WB/ICC/IF/FACS |
| Host / Source | Mouse                |
| Reactivity    | Human                |

### PRODUCT PROPERTIES

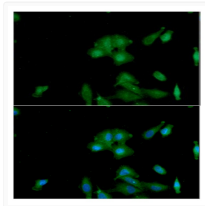
|                     |   |
|---------------------|---|
| Clonality           | Monoclonal  |
| Concentration       | 1 mg/mL   |
| Conjugation         | Unconjugated  |
| Purification        | By protein-G affinity chromatography  |
| Formulation         | Liquid in phosphate-Buffered Saline (pH 7.4) with 0.02% Sodium Azide, 10% Glycerol  |
| Isotype             | IgG2ak  |
| Storage Instruction | For short term storage, keep at +2C to +8C for up to 1 week. For long term storage, aliquot and store at -20C, and avoid repeat freeze-thaw cycles. |

### TARGET INFORMATION

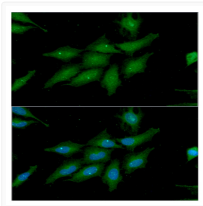
|                  |                           |
|------------------|---------------------------|
| Gene ID          | <a href="#">3569</a>      |
| Gene Symbol      | <a href="#">IL6</a>       |
| UniProt ID       | <a href="#">IL6_HUMAN</a> |
| Immunogen Region | 30-212aa                  |

### ADDITIONAL INFORMATION

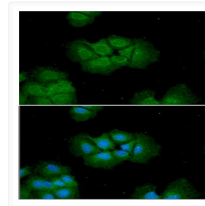
Note STRICTLY FOR FURTHER SCIENTIFIC RESEARCH USE ONLY (RUO). MUST NOT TO BE USED IN DIAGNOSTIC OR THERAPEUTIC APPLICATIONS.



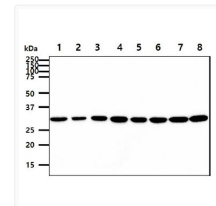
ICC IF of IL-6 in A549 cells stained with STJA0041547 antibody Alexa Fluor 488 secondary antibody green and DAPI nuclear stain blue



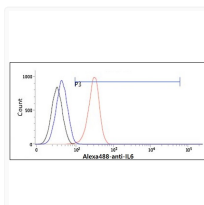
ICC IF of IL-6 in HeLa cells stained with STJA0041547 antibody and Alexa Fluor 488 secondary antibody green and DAPI nuclear stain blue



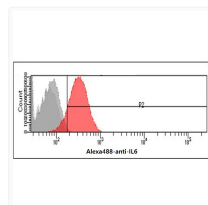
ICC IF of IL-6 in Hep3B cells stained with Human IL-6 antibody STJA0041547 Alexa Fluor 488 secondary green DAPI nuclear stain blue



Western blot of human IL-6 antibody detection across 8 cell lysate lanes using HRP-conjugated secondary and ECL



Flow cytometry of IL-6 in LNCaP cells stained with Human IL-6 antibody STJA0041547



Flow cytometry of IL-6 in HeLa cells using Human IL-6 antibody STJA0041547 with Alexa Fluor 488 detection