

## Anti-PEDFR/PNPLA2 antibody (30-504aa) [AT18E6] (STJA0041546)

### GENERAL INFORMATION

Product Type	Primary antibodies
Applications	ELISA/WB/ICC/IF/FACS
Host / Source	Mouse
Reactivity	Human

### PRODUCT PROPERTIES

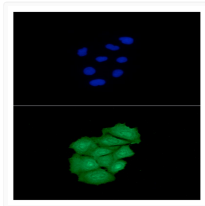
Clonality	Monoclonal
Concentration	1 mg/mL
Conjugation	Unconjugated
Purification	By protein-G affinity chromatography
Formulation	Liquid in phosphate-Buffered Saline (pH 7.4) with 0.02% Sodium Azide, 10% Glycerol
Isotype	IgG2bk
Storage Instruction	For short term storage, keep at +2C to +8C for up to 1 week. For long term storage, aliquot and store at -20C, and avoid repeat freeze-thaw cycles.

### TARGET INFORMATION

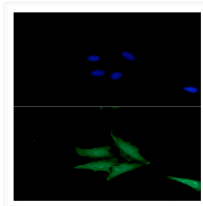
Gene ID	<a href="#">57104</a>
Gene Symbol	<a href="#">PNPLA2</a>
UniProt ID	<a href="#">PLPL2_HUMAN</a>
Immunogen Region	30-504aa

### ADDITIONAL INFORMATION

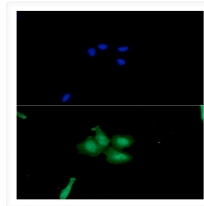
Note STRICTLY FOR FURTHER SCIENTIFIC RESEARCH USE ONLY (RUO). MUST NOT TO BE USED IN DIAGNOSTIC OR THERAPEUTIC APPLICATIONS.



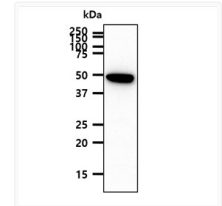
ICC IF of PEDFR PNPLA2 ATGL in Hep3B cells with Alexa Fluor 488 and DAPI staining



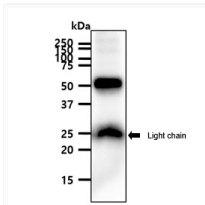
ICC IF of ATGL in HeLa cells stained with STJA0041546 antibody and Alexa Fluor 488



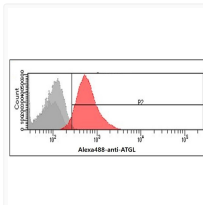
ICC IF of ATGL in A549 cells stained with STJA0041546 antibody Alexa Fluor 488 secondary and DAPI



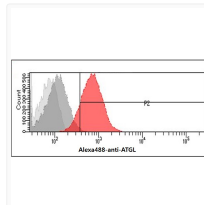
Western blot of human PEDFR PNPLA2 ATGL protein in A431 cell lysate using STJA0041546 antibody



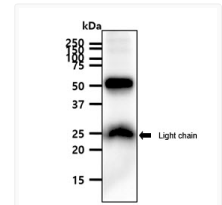
Western blot of mouse adipose tissue lysate probed with anti-human ATGL antibody



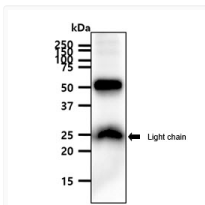
Flow cytometry of ATGL in Hep3B cells stained with STJA0041546 human PEDFR PNPLA2 antibody



Flow cytometry of ATGL in HeLa cells using Human PEDFR PNPLA2 antibody STJA0041546



Flow cytometry of Human PEDFR PNPLA2 antibody STJA0041546 showing cell population distribution



Flow cytometry of Human PEDFR PNPLA2 antibody STJA0041546 showing cell population distribution