

Anti-KCTD15 antibody (1-159aa) [AT2B11] (STJA0041545)

GENERAL INFORMATION

Product Type	Primary antibodies
Applications	ELISA/WB/ICC/IF/FACS
Host / Source	Mouse
Reactivity	Human

PRODUCT PROPERTIES

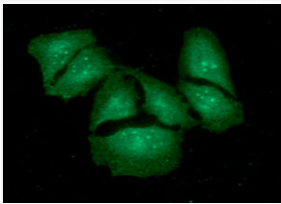
Clonality	Monoclonal
Concentration	1 mg/mL
Conjugation	Unconjugated
Purification	By protein-G affinity chromatography
Formulation	Liquid in phosphate-Buffered Saline (pH 7.4) with 0.02% Sodium Azide, 10% Glycerol
Isotype	IgG2bk
Storage Instruction	For short term storage, keep at +2C to +8C for up to 1 week. For long term storage, aliquot and store at -20C, and avoid repeat freeze-thaw cycles.

TARGET INFORMATION

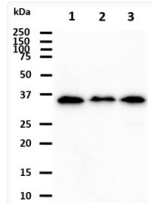
Gene ID	79047
Gene Symbol	KCTD15
UniProt ID	KCD15_HUMAN
Immunogen Region	1-159aa

ADDITIONAL INFORMATION

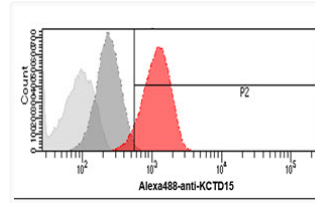
Note STRICTLY FOR FURTHER SCIENTIFIC RESEARCH USE ONLY (RUO). MUST NOT TO BE USED IN DIAGNOSTIC OR THERAPEUTIC APPLICATIONS.



KCTD15 immunofluorescence in HeLa cells with Alexa Fluor 488 detection



Western blot of human KCTD15 antibody in HeLa NIH 3T3 and K562 cell lysates



Flow cytometry of KCTD15 in HeLa cells stained with STJA0041545 antibody