

Anti-STEAP1 antibody (1-70aa) [J2D2] (STJA0041541)

GENERAL INFORMATION

Product Type	Primary antibodies
Applications	ELISA/WB/ICC/IF/IHC
Host / Source	Mouse
Reactivity	Human

PRODUCT PROPERTIES

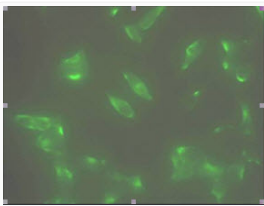
Clonality	Monoclonal
Concentration	1 mg/mL
Conjugation	Unconjugated
Purification	By protein-G affinity chromatography
Formulation	Liquid in phosphate-Buffered Saline (pH 7.4) with 0.02% Sodium Azide, 10% Glycerol
Isotype	IgG2bk
Storage Instruction	For short term storage, keep at +2C to +8C for up to 1 week. For long term storage, aliquot and store at -20C, and avoid repeat freeze-thaw cycles.

TARGET INFORMATION

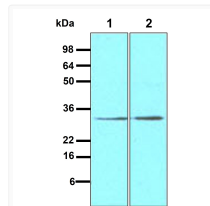
Gene ID	26872
Gene Symbol	STEAP1
UniProt ID	STEAP1_HUMAN
Immunogen Region	1-70aa

ADDITIONAL INFORMATION

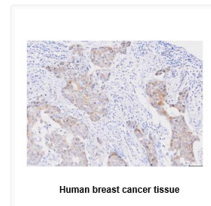
Note STRICTLY FOR FURTHER SCIENTIFIC RESEARCH USE ONLY (RUO). MUST NOT TO BE USED IN DIAGNOSTIC OR THERAPEUTIC APPLICATIONS.



ICC IF of STEAP1 in LNCap cells stained with STJA0041541 antibody and Alexa Fluor 488

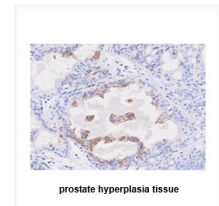


Western blot of human STEAP1 antibody showing LNCap cell lysate and mouse testis tissue lysate



Human breast cancer tissue

Human STEAP1 antibody IHC staining in breast cancer and prostate hyperplasia tissue sections



prostate hyperplasia tissue

Human STEAP1 antibody immunohistochemistry staining showing tissue-specific expression patterns