

## Anti-Synuclein-alpha/beta antibody (119-140aa) [3B6] (STJA0041538)

### GENERAL INFORMATION

Product Type	Primary antibodies
Applications	ELISA/WB/ICC/IF/FACS
Host / Source	Mouse
Reactivity	Human

### PRODUCT PROPERTIES

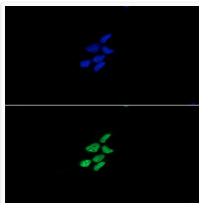
Clonality	Monoclonal
Concentration	1 mg/mL
Conjugation	Unconjugated
Purification	By protein-G affinity chromatography
Formulation	Liquid in phosphate-Buffered Saline (pH 7.4) with 0.02% Sodium Azide, 10% Glycerol
Isotype	IgG1k
Storage Instruction	For short term storage, keep at +2C to +8C for up to 1 week. For long term storage, aliquot and store at -20C, and avoid repeat freeze-thaw cycles.

### TARGET INFORMATION

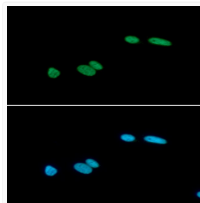
Gene ID	<a href="#">6622</a>
Gene Symbol	<a href="#">SNCA</a>
UniProt ID	<a href="#">SYUA_HUMAN</a>
Immunogen Region	119-140aa

### ADDITIONAL INFORMATION

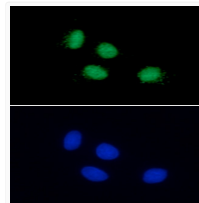
Note STRICTLY FOR FURTHER SCIENTIFIC RESEARCH USE ONLY (RUO). MUST NOT TO BE USED IN DIAGNOSTIC OR THERAPEUTIC APPLICATIONS.



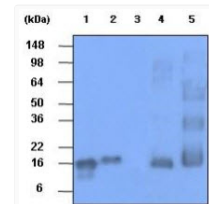
ICC IF of alpha and beta-synuclein in LNCaP cells with Alexa Fluor 488 and DAPI staining



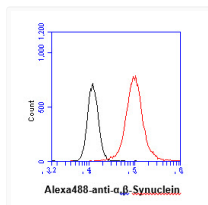
ICC IF of alpha and beta-synuclein in U87MG cells with Alexa Fluor 488 and DAPI staining



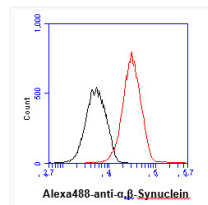
ICC IF of human synuclein-alpha beta in C6 cells stained with STJA0041538 antibody



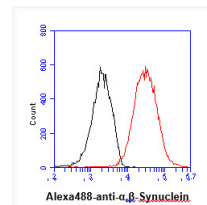
Western blot of human synuclein proteins probed with anti-HSP60 antibody showing recombinant and tissue lysate samples



Flow cytometry of human synuclein-alpha beta in LNCaP cells with Alexa Fluor 488 detection



Flow cytometry of human synuclein-alpha beta in U87MG cells with Alexa Fluor 488 detection



Flow cytometry of alpha and beta-synuclein in C6 cells with Alexa Fluor 488 detection