

Anti-CPI-17/PPP1R14A antibody (1-147aa) [4H10] (STJA0041533)

GENERAL INFORMATION

| | |
|---------------|--------------------|
| Product Type | Primary antibodies |
| Applications | ELISA/WB/ICC/IF |
| Host / Source | Mouse |
| Reactivity | Human |

PRODUCT PROPERTIES

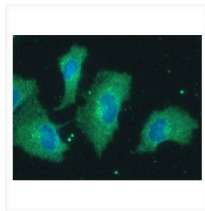
| | |
|---------------------|---|
| Clonality | Monoclonal |
| Concentration | 1 mg/mL |
| Conjugation | Unconjugated |
| Purification | By protein-G affinity chromatography |
| Formulation | Liquid in phosphate-Buffered Saline (pH 7.4) with 0.02% Sodium Azide, 10% Glycerol |
| Isotype | IgG2ak |
| Storage Instruction | For short term storage, keep at +2C to +8C for up to 1 week. For long term storage, aliquot and store at -20C, and avoid repeat freeze-thaw cycles. |

TARGET INFORMATION

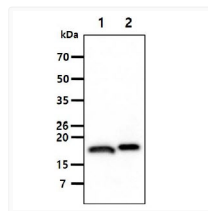
| | |
|------------------|-----------------------------|
| Gene ID | 94274 |
| Gene Symbol | PPP1R14A |
| UniProt ID | PP14A_HUMAN |
| Immunogen Region | 1-147aa |

ADDITIONAL INFORMATION

Note STRICTLY FOR FURTHER SCIENTIFIC RESEARCH USE ONLY (RUO). MUST NOT TO BE USED IN DIAGNOSTIC OR THERAPEUTIC APPLICATIONS.



ICC IF of PPP1R14A in A549 cells with Alexa Fluor 488 secondary antibody and DAPI nuclear stain



Western blot of human CPI-17 PPP1R14A antibody STJA0041533 in A549 and NIH-3T3 cell lysates