

## Anti-NPM1 antibody (81-294aa) [5E3] (STJA0041521)

### GENERAL INFORMATION

Product Type	Primary antibodies
Applications	ELISA/WB/ICC/IF/IHC/FACS
Host / Source	Mouse
Reactivity	Human

### PRODUCT PROPERTIES

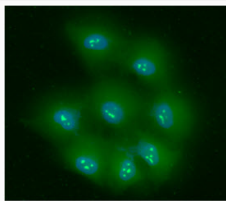
Clonality	Monoclonal
Concentration	1 mg/mL
Conjugation	Unconjugated
Purification	By protein-G affinity chromatography
Formulation	Liquid in phosphate-Buffered Saline (pH 7.4) with 0.02% Sodium Azide, 10% Glycerol
Isotype	IgG2bk
Storage Instruction	For short term storage, keep at +2C to +8C for up to 1 week. For long term storage, aliquot and store at -20C, and avoid repeat freeze-thaw cycles.

### TARGET INFORMATION

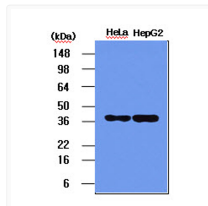
Gene ID	<a href="#">4869</a>
Gene Symbol	<a href="#">NPM1</a>
UniProt ID	<a href="#">NPM_HUMAN</a>
Immunogen Region	81-294aa

### ADDITIONAL INFORMATION

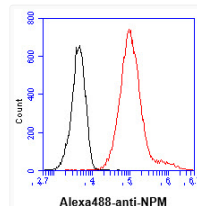
Note STRICTLY FOR FURTHER SCIENTIFIC RESEARCH USE ONLY (RUO). MUST NOT TO BE USED IN DIAGNOSTIC OR THERAPEUTIC APPLICATIONS.



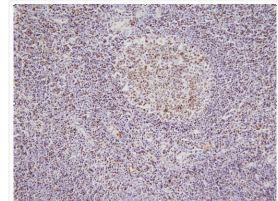
ICC IF of NPM1 in HeLa cells stained with STJA0041521 antibody Alexa Fluor 488 secondary and DAPI nuclear stain



Western blot of human NPM1 protein in HeLa and HepG2 cell lysates using anti-NPM1 antibody



Flow cytometry of NPM1 in HeLa cells with goat anti-mouse IgG Alexa Fluor 488



IHC staining of human palatine tonsil tissue with NPM1 antibody 5E3 at 1:100 dilution