

Anti-KIR2DL1/KIR2DL3/KIR2DS4 antibody (23-223 aa) [2F9] (STJA0041515)

GENERAL INFORMATION

Product Type	Primary antibodies
Applications	ELISA/WB/ICC/IF/FACS
Host / Source	Mouse
Reactivity	Human

PRODUCT PROPERTIES

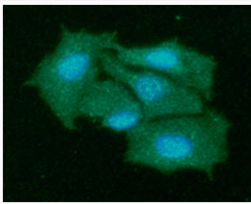
Clonality	Monoclonal
Concentration	1 mg/mL
Conjugation	Unconjugated
Purification	By protein-G affinity chromatography
Formulation	Liquid in phosphate-Buffered Saline (pH 7.4) with 0.02% Sodium Azide, 10% Glycerol
Isotype	IgG2ak
Storage Instruction	For short term storage, keep at +2C to +8C for up to 1 week. For long term storage, aliquot and store at -20C, and avoid repeat freeze-thaw cycles.

TARGET INFORMATION

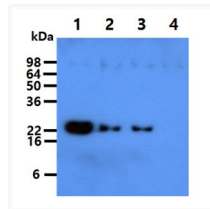
Gene ID	3802
Gene Symbol	KIR2DL1
UniProt ID	K12L1_HUMAN
Immunogen Region	23-223 aa

ADDITIONAL INFORMATION

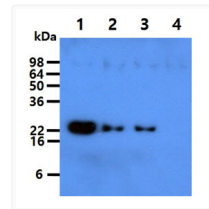
Note STRICTLY FOR FURTHER SCIENTIFIC RESEARCH USE ONLY (RUO). MUST NOT TO BE USED IN DIAGNOSTIC OR THERAPEUTIC APPLICATIONS.



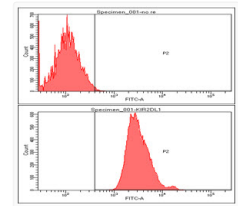
ICC IF of KIR2DL1 in Hep3B cells stained with STJA0041515 antibody and Alexa Fluor 488



Western blot of human KIR2DL1, KIR2DL3, KIR2DS4 recombinant proteins probed with anti-human KIR2DL1 antibody



Western blot of human KIR2DL1, KIR2DL3, KIR2DS4 recombinant proteins probed with anti-human KIR2DL1 antibody



Flow cytometry of KIR2DL1 expression in Hep3B cells with Alexa Fluor 488 detection