

Anti-SETD7 antibody (1-366aa) [s4E5] (STJA0041500)

GENERAL INFORMATION

Product Type	Primary antibodies
Applications	ELISA/WB/ICC/IF/FACS
Host / Source	Mouse
Reactivity	Human

PRODUCT PROPERTIES

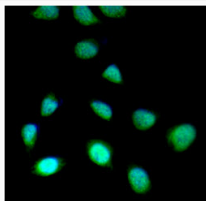
Clonality	Monoclonal
Concentration	1 mg/mL
Conjugation	Unconjugated
Purification	By protein-A affinity chromatography
Formulation	Liquid in phosphate-Buffered Saline (pH 7.4) with 0.02% Sodium Azide, 10% Glycerol
Isotype	IgG2bk
Storage Instruction	For short term storage, keep at +2C to +8C for up to 1 week. For long term storage, aliquot and store at -20C, and avoid repeat freeze-thaw cycles.

TARGET INFORMATION

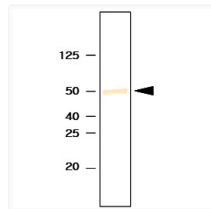
Gene ID	80854
Gene Symbol	SETD7
UniProt ID	SETD7_HUMAN
Immunogen Region	1-366aa

ADDITIONAL INFORMATION

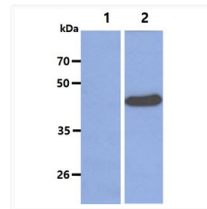
Note STRICTLY FOR FURTHER SCIENTIFIC RESEARCH USE ONLY (RUO). MUST NOT TO BE USED IN DIAGNOSTIC OR THERAPEUTIC APPLICATIONS.



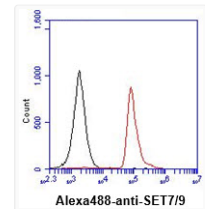
ICC IF of SET 7 9 in HeLa cells stained with SETD7 antibody and Alexa Fluor 488



Western blot of human SETD7 protein using anti-SETD7 antibody at 1:1000 dilution



Western blot of human SETD7 antibody showing 293T cell lysate and SET 7 9 transfected lysate



Flow cytometry of SET 7 9 in Jurkat cells with SETD7 antibody staining and isotype control