

## Anti-Growth Hormone 1/GH1 antibody (27-217aa) [g3H5] (STJA0041492)

### GENERAL INFORMATION

Product Type	Primary antibodies
Applications	ELISA/WB/Neut
Host / Source	Mouse
Reactivity	Human

### PRODUCT PROPERTIES

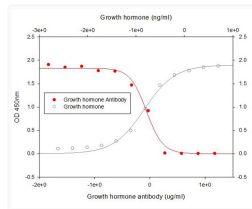
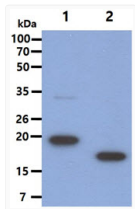
Clonality	Monoclonal
Concentration	1 mg/mL
Conjugation	Unconjugated
Purification	By protein-G affinity chromatography
Formulation	Liquid in phosphate-Buffered Saline (pH 7.4) with 0.02% Sodium Azide, 10% Glycerol
Isotype	IgG2bk
Storage Instruction	For short term storage, keep at +2C to +8C for up to 1 week. For long term storage, aliquot and store at -20C, and avoid repeat freeze-thaw cycles.

### TARGET INFORMATION

Gene ID	<a href="#">2688</a>
Gene Symbol	<a href="#">GH1</a>
UniProt ID	<a href="#">SOMA_HUMAN</a>
Immunogen Region	27-217aa

### ADDITIONAL INFORMATION

Note STRICTLY FOR FURTHER SCIENTIFIC RESEARCH USE ONLY (RUO). MUST NOT TO BE USED IN DIAGNOSTIC OR THERAPEUTIC APPLICATIONS.



Western blot of human GH1 using anti-human Growth hormone antibody showing recombinant hGH protein bands

Neutralization assay of Human Growth Hormone 1 GH1 antibody using Nb2-11 rat lymphoma cells