

Anti-Cathepsin L antibody (18-333aa) [AT18F6] (STJA0041482)

GENERAL INFORMATION

Product Type	Primary antibodies
Applications	ELISA/WB/ICC/IF/FACS
Host / Source	Mouse
Reactivity	Human

PRODUCT PROPERTIES

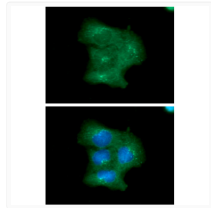
Clonality	Monoclonal
Concentration	1 mg/mL
Conjugation	Unconjugated
Purification	By protein-G affinity chromatography
Formulation	Liquid in phosphate-Buffered Saline (pH 7.4) with 0.02% Sodium Azide, 10% Glycerol
Isotype	IgG2ak
Storage Instruction	For short term storage, keep at +2C to +8C for up to 1 week. For long term storage, aliquot and store at -20C, and avoid repeat freeze-thaw cycles.

TARGET INFORMATION

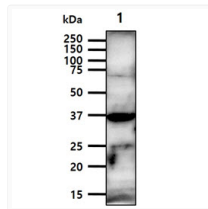
Gene ID	1514
Gene Symbol	CTSL
UniProt ID	CATL1_HUMAN
Immunogen Region	18-333aa

ADDITIONAL INFORMATION

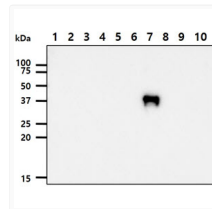
Note STRICTLY FOR FURTHER SCIENTIFIC RESEARCH USE ONLY (RUO). MUST NOT TO BE USED IN DIAGNOSTIC OR THERAPEUTIC APPLICATIONS.



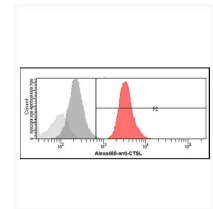
ICC IF of CTSL in A549 cells stained with Human Cathepsin L antibody STJA0041482



Western blot of human Cathepsin L in A549 cell lysate using anti-human CTSL antibody



Western blot showing human Cathepsin L antibody specificity across 10 recombinant cathepsin proteins



Flow cytometry of CTSL in A549 cells using Human Cathepsin L antibody STJA0041482