

## Anti-Clusterin/CLU antibody (1-333aa) [1A11] (STJA0041478)

### GENERAL INFORMATION

Product Type	Primary antibodies
Applications	ELISA/WB/ICC/IF/IHC/FACS
Host / Source	Mouse
Reactivity	Human

### PRODUCT PROPERTIES

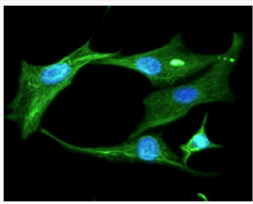
Clonality	Monoclonal
Concentration	1 mg/mL
Conjugation	Unconjugated
Purification	By protein-G affinity chromatography
Formulation	Liquid in phosphate-Buffered Saline (pH 7.4) with 0.02% Sodium Azide, 10% Glycerol
Isotype	IgG1k
Storage Instruction	For short term storage, keep at +2C to +8C for up to 1 week. For long term storage, aliquot and store at -20C, and avoid repeat freeze-thaw cycles.

### TARGET INFORMATION

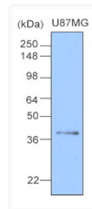
Gene ID	<a href="#">1191</a>
Gene Symbol	<a href="#">CLU</a>
UniProt ID	<a href="#">CLUS_HUMAN</a>
Immunogen Region	1-333aa

### ADDITIONAL INFORMATION

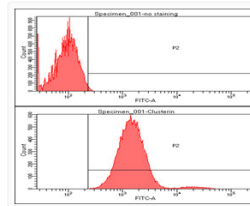
Note STRICTLY FOR FURTHER SCIENTIFIC RESEARCH USE ONLY (RUO). MUST NOT TO BE USED IN DIAGNOSTIC OR THERAPEUTIC APPLICATIONS.



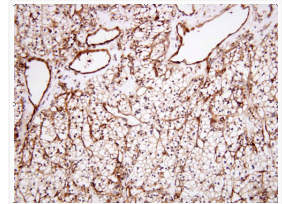
ICC IF of Clusterin in U87MG cells with STJA0041478 antibody Alexa Fluor secondary antibody and DAPI nuclear stain



Western blot of human Clusterin CLU antibody 488 STJA0041478 on U87MG cell lysate



Flow cytometry of Clusterin in U87MG cells using Human Clusterin CLU antibody STJA0041478



IHC staining of human renal cell carcinoma tissue with anti-Clusterin antibody DAB detection