

Anti-Calmodulin 2/CALM2 antibody (1-149aa) [J4D8] (STJA0041470)

GENERAL INFORMATION

Product Type	Primary antibodies
Applications	ELISA/WB/ICC/IF/FACS
Host / Source	Mouse
Reactivity	Human

PRODUCT PROPERTIES

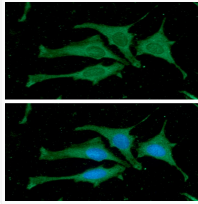
Clonality	Monoclonal
Concentration	1 mg/mL
Conjugation	Unconjugated
Purification	By protein-G affinity chromatography
Formulation	Liquid in phosphate-Buffered Saline (pH 7.4) with 0.02% Sodium Azide, 10% Glycerol
Isotype	IgG2ak
Storage Instruction	For short term storage, keep at +2C to +8C for up to 1 week. For long term storage, aliquot and store at -20C, and avoid repeat freeze-thaw cycles.

TARGET INFORMATION

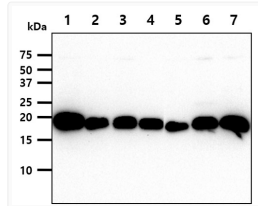
Gene ID	801/805/808
Gene Symbol	CALM2
UniProt ID	CALM2_HUMAN
Immunogen Region	1-149aa

ADDITIONAL INFORMATION

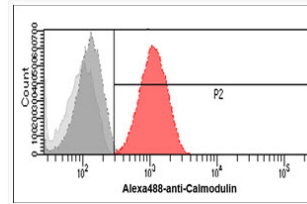
Note STRICTLY FOR FURTHER SCIENTIFIC RESEARCH USE ONLY (RUO). MUST NOT TO BE USED IN DIAGNOSTIC OR THERAPEUTIC APPLICATIONS.



ICC IF of Calmodulin in HeLa cells with STJA0041470 antibody Alexa Fluor 488 secondary and DAPI nuclear stain



Western blot of human CALM2 using anti-calmodulin antibody across multiple cell lines



Flow cytometry of Calmodulin 2 in HeLa cells using STJA0041470 antibody with Alexa Fluor 488 detection