

## Anti-Crystallin alpha A/CRYAA antibody (1-173aa) [c9F2] (STJA0041469)

### GENERAL INFORMATION

Product Type	Primary antibodies
Applications	ELISA/WB/FACS
Host / Source	Mouse
Reactivity	Human

### PRODUCT PROPERTIES

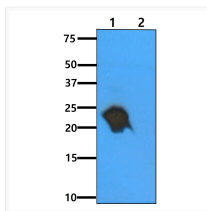
Clonality	Monoclonal
Concentration	1 mg/mL
Conjugation	Unconjugated
Purification	By protein-G affinity chromatography
Formulation	Liquid in phosphate-Buffered Saline (pH 7.4) with 0.02% Sodium Azide, 10% Glycerol
Isotype	IgG1k
Storage Instruction	For short term storage, keep at +2C to +8C for up to 1 week. For long term storage, aliquot and store at -20C, and avoid repeat freeze-thaw cycles.

### TARGET INFORMATION

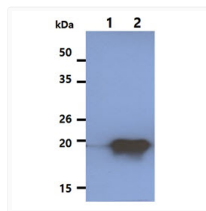
Gene ID	<a href="#">102724652/1409</a>
Gene Symbol	<a href="#">CRYAA</a>
UniProt ID	<a href="#">CRYAA_HUMAN</a>
Immunogen Region	1-173aa

### ADDITIONAL INFORMATION

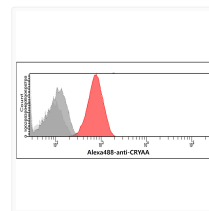
Note STRICTLY FOR FURTHER SCIENTIFIC RESEARCH USE ONLY (RUO). MUST NOT TO BE USED IN DIAGNOSTIC OR THERAPEUTIC APPLICATIONS.



Western blot of human Crystallin alpha A antibody showing recombinant protein detection



Western blot of Human Crystallin alpha A antibody showing 293T and transfected lysate bands



Flow cytometry of Crystallin alpha A in Balb 3T3 cells using STJA0041469 antibody with Alexa Fluor 488 detection