

Anti-CEBP beta/CEBPB antibody (1-271 aa) [47A1] (STJA0041468)

GENERAL INFORMATION

Product Type	Primary antibodies
Applications	ELISA/WB/ICC/IF
Host / Source	Mouse
Reactivity	Human

PRODUCT PROPERTIES

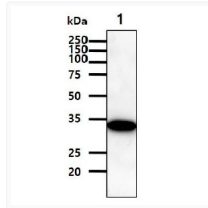
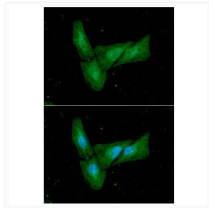
Clonality	Monoclonal
Concentration	1 mg/mL
Conjugation	Unconjugated
Purification	By protein-G affinity chromatography
Formulation	Liquid in phosphate-Buffered Saline (pH 7.4) with 0.02% Sodium Azide, 10% Glycerol
Isotype	IgG1k
Storage Instruction	For short term storage, keep at +2C to +8C for up to 1 week. For long term storage, aliquot and store at -20C, and avoid repeat freeze-thaw cycles.

TARGET INFORMATION

Gene ID	1051
Gene Symbol	CEBPB
UniProt ID	CEBPB_HUMAN
Immunogen Region	1-271 aa

ADDITIONAL INFORMATION

Note STRICTLY FOR FURTHER SCIENTIFIC RESEARCH USE ONLY (RUO). MUST NOT TO BE USED IN DIAGNOSTIC OR THERAPEUTIC APPLICATIONS.



ICC IF of C EBP-beta in HeLa cells stained with STJA0041468 antibody Alexa Fluor 488 secondary and DAPI nuclear stain
Western blot of human CEBPB protein in 293T cell lysate using anti-CEBP-beta antibody