

Anti-Phospho-WAVE1-Tyr-125 antibody (STJA0041448)

GENERAL INFORMATION

Product Type	Primary antibodies
Applications	ELISA/WB/ICC
Host / Source	Rabbit
Reactivity	Human/Mouse/Rat

PRODUCT PROPERTIES

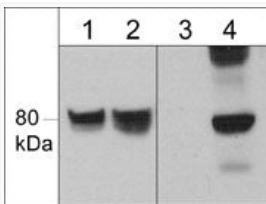
Clonality	Polyclonal
Conjugation	Unconjugated
Purification	Antigen Affinity Purified
Dilution Range	WB 1:1000 ICC 1:200
Formulation	PBS + 1 mg/ml BSA, 0.05% NaN ₃ and 50% glycerol
Isotype	IgG
Molecular Weight	80
Storage Instruction	Storage at -20°C is recommended, as aliquots may be taken without freeze/thawing due to presence of 50% glycerol. Stable for at least 1 year at -20°C.

TARGET INFORMATION

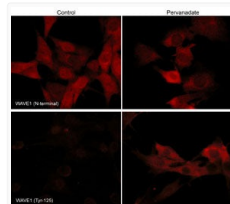
Gene ID	8936
Gene Symbol	WASF1
UniProt ID	WASF1_HUMAN
Immunogen Sequence	Human
Specificity	This antibody was cross-adsorbed to phospho-WAVE (Tyr-150) and unphosphorylated WAVE (Tyr-125) peptides before affinity purification using phospho-WAVE (Tyr-125) peptide. In western blots, the antibody detects an 80 kDa* band corresponding to phospho

ADDITIONAL INFORMATION

Note STRICTLY FOR FURTHER SCIENTIFIC RESEARCH USE ONLY (RUO). MUST NOT TO BE USED IN DIAGNOSTIC OR THERAPEUTIC APPLICATIONS.



Western blot WAVE1 and WAVE Tyr-125 detection in human SYF cSrc transformed cells STJA0041448



ICC staining phosphorylated WAVE in mouse C2C12 cells using antibody with Cy3 detection STJA0041448