

Anti-Semaphorin-6A antibody (C-Term) (STJA0041409)

GENERAL INFORMATION

Product Type	Primary antibodies
Applications	ELISA/WB/ICC/IP
Host / Source	Rabbit
Reactivity	Chicken/Human/Mouse/Rat

PRODUCT PROPERTIES

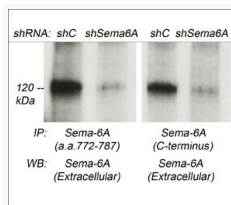
Clonality	Polyclonal
Conjugation	Unconjugated
Purification	Antigen Affinity Purified
Dilution Range	WB 1:500 ICC 1:100 IP 1:100
Formulation	PBS + 1 mg/ml BSA, 0.05% Na ₃ N and 50% glycerol
Isotype	IgG
Molecular Weight	120
Storage Instruction	Storage at -20°C is recommended, as aliquots may be taken without freeze/thawing due to presence of 50% glycerol. Stable for at least 1 year at -20°C.

TARGET INFORMATION

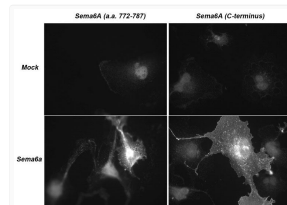
Gene ID	57556
Gene Symbol	SEMA6A
UniProt ID	SEM6A_HUMAN
Immunogen Region	C-Term
Immunogen Sequence	Human
Specificity	The antibody detects a 120kDa* protein corresponding to the apparent molecular mass of Sema-6A on SDS-PAGE immunoblots of Sema-6A transfected COS7 cells, human colorectal cancer cells, and rat PC12 cells. In addition, shRNA knockdown of Sema-6A expre

ADDITIONAL INFORMATION

Note STRICTLY FOR FURTHER SCIENTIFIC RESEARCH USE ONLY (RUO). MUST NOT TO BE USED IN DIAGNOSTIC OR THERAPEUTIC APPLICATIONS.



Western blot Sema-6A immunoprecipitation in human colorectal cancer cells STJA0041409



ICC staining Sema-6A in mock and transfected COS7 cells with fluorescent detection STJA0041409