

Anti-Phospho-Sphingosine Kinase 1-Ser-225 antibody (STJA0041399)

GENERAL INFORMATION

Product Type	Primary antibodies
Applications	ELISA/WB
Host / Source	Rabbit
Reactivity	Human

PRODUCT PROPERTIES

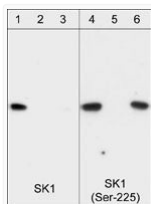
Clonality	Polyclonal
Conjugation	Unconjugated
Purification	Antigen Affinity Purified
Dilution Range	WB 1:1000
Formulation	PBS + 1 mg/ml BSA, 0.05% NaN ₃ and 50% glycerol
Isotype	IgG
Molecular Weight	42
Storage Instruction	Storage at -20°C is recommended, as aliquots may be taken without freeze/thawing due to presence of 50% glycerol. Stable for at least 1 year at -20°C.

TARGET INFORMATION

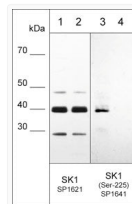
Gene ID	8877
Gene Symbol	SPHK1
UniProt ID	SPHK1_HUMAN
Immunogen Sequence	Human
Specificity	This antibody was cross-adsorbed to non-specific phosphoserine and unphosphorylated SK1 (Ser-225) peptide before affinity purification using phospho-SK1 (Ser-225) peptide. The purified antibody detects a 47 kDa* full-length recombinant human SK1 prot

ADDITIONAL INFORMATION

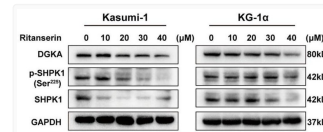
Note STRICTLY FOR FURTHER SCIENTIFIC RESEARCH USE ONLY (RUO). MUST NOT TO BE USED IN DIAGNOSTIC OR THERAPEUTIC APPLICATIONS.



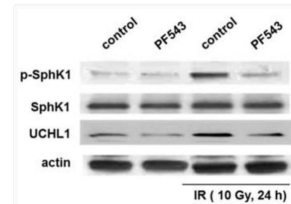
Western blot phosphorylated human SK1 protein probed with anti-SK1 Ser-225 antibody STJA0041399



Western blot anti-SK1 Ser-225 antibody detection in HeLa cells with phosphatase treatment STJA0041399



Western blot p-SphK1Ser225 protein expression in AML cells using antibody STJA0041399



Western blot p-SphK1 detection using antibody in human pulmonary artery ECs STJA0041399