

## Anti-Synapsin I antibody (C-Term) [M365] (STJA0041382)

### GENERAL INFORMATION

|               |                    |
|---------------|--------------------|
| Product Type  | Primary antibodies |
| Applications  | ELISA/WB/ICC       |
| Host / Source | Mouse              |
| Reactivity    | Human/Mouse/Rat    |

### PRODUCT PROPERTIES

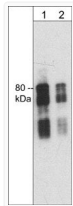
|                     |  |
|---------------------|--|
| Clonality           | Monoclonal   |
| Conjugation         | Unconjugated   |
| Purification        | Protein A Purified   |
| Dilution Range      | WB 1:1000<br>ICC 1:50  |
| Formulation         | PBS + 1 mg/ml BSA, 0.05% NaN <sub>3</sub> and 50% glycerol   |
| Isotype             | IgG1   |
| Molecular Weight    | 80   |
| Storage Instruction | Storage at -20°C is recommended, as aliquots may be taken without freeze/thawing due to presence of 50% glycerol. Stable for at least 1 year at -20°C. |

### TARGET INFORMATION

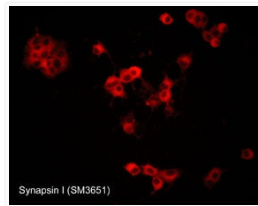
|                    |  |
|--------------------|--|
| Gene ID            | <a href="#">20964</a>  |
| Gene Symbol        | <a href="#">Syn1</a>   |
| UniProt ID         | <a href="#">SYN1_MOUSE</a>   |
| Immunogen Region   | C-Term   |
| Immunogen Sequence | Mouse  |
| Specificity        | This antibody detects an 80 kDa <sup>+</sup> protein corresponding to the molecular mass of Synapsin I on SDS-PAGE immunoblots of adult mouse brain. |

### ADDITIONAL INFORMATION

Note STRICTLY FOR FURTHER SCIENTIFIC RESEARCH USE ONLY (RUO). MUST NOT TO BE USED IN DIAGNOSTIC OR THERAPEUTIC APPLICATIONS.



anti-Synapsin I antibody Western blot mouse brain lysate at two dilutions STJA0041382



antibody ICC staining Synapsin I labeling in NGF-differentiated rat PC12 cells STJA0041382