

Anti-PTP1B antibody (N-Term) (STJA0041342)

GENERAL INFORMATION

Product Type	Primary antibodies
Applications	ELISA/WB/ICC
Host / Source	Rabbit
Reactivity	Human/Mouse/Rat

PRODUCT PROPERTIES

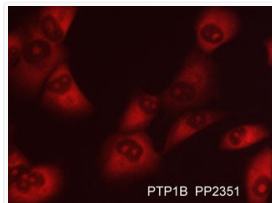
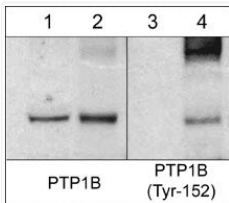
Clonality	Polyclonal
Conjugation	Unconjugated
Purification	Antigen Affinity Purified
Dilution Range	WB 1:1000 ICC 1:100
Formulation	PBS + 1 mg/ml BSA, 0.05% NaN ₃ and 50% glycerol
Isotype	IgG
Molecular Weight	50
Storage Instruction	Storage at -20°C is recommended, as aliquots may be taken without freeze/thawing due to presence of 50% glycerol. Stable for at least 1 year at -20°C.

TARGET INFORMATION

Gene ID	5770
Gene Symbol	PTPN1
UniProt ID	PTN1_HUMAN
Immunogen Region	N-Term
Immunogen Sequence	Human
Specificity	The antibody detects a 50 kDa* band corresponding to PTP1B in western blots of human A431, Jurkat, HeLa, and mouse SYF cells. This reactivity can be specifically blocked using PTP1B (a.a. 146-157) peptide (PX2355).

ADDITIONAL INFORMATION

Note STRICTLY FOR FURTHER SCIENTIFIC RESEARCH USE ONLY (RUO). MUST NOT TO BE USED IN DIAGNOSTIC OR THERAPEUTIC APPLICATIONS.



Western blot PTP1B phospho-Tyr152 detection in treated and untreated mouse SYF cells. ICC staining PTP1B in human NCI-H1915 lung carcinoma cells using antibody STJA0041342.