

Anti-Plexin A1 antibody (N-Term) (STJA0041330)

GENERAL INFORMATION

Product Type	Primary antibodies
Applications	ELISA/WB/ICC/IHC/IP
Host / Source	Rabbit
Reactivity	Human/Mouse/Rat

PRODUCT PROPERTIES

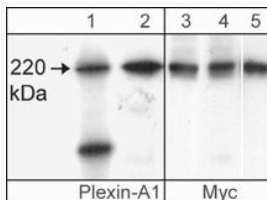
Clonality	Polyclonal
Conjugation	Unconjugated
Purification	Antigen Affinity Purified
Dilution Range	WB 1:1000 IHC 1:100 ICC 1:100 IP 1:50
Formulation	PBS + 1 mg/ml BSA, 0.05% NaN ₃ and 50% glycerol
Isotype	IgG
Molecular Weight	220
Storage Instruction	Storage at -20°C is recommended, as aliquots may be taken without freeze/thawing due to presence of 50% glycerol. Stable for at least 1 year at -20°C.

TARGET INFORMATION

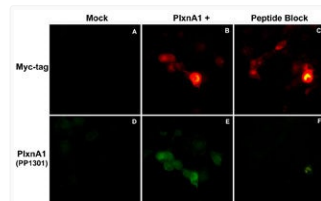
Gene ID	5361
Gene Symbol	PLXNA1
UniProt ID	PLXA1_HUMAN
Immunogen Region	N-Term
Immunogen Sequence	Human
Specificity	The antibody detects a 220 kDa* protein corresponding to the apparent molecular mass of Plexin-A1 on SDS-PAGE immunoblots of neonatal rat brain and Cos-7 cells transfected with mouse Plexin-A1. In immunocytochemistry, this antibody co-localizes with

ADDITIONAL INFORMATION

Note STRICTLY FOR FURTHER SCIENTIFIC RESEARCH USE ONLY (RUO). MUST NOT TO BE USED IN DIAGNOSTIC OR THERAPEUTIC APPLICATIONS.



Western blot analysis Plexin-A1 protein using antibody in transfected cells and rat brain STJA0041330



ICC double labeling Cos-7 cells with anti-Plexin-A1 rabbit polyclonal antibody STJA0041330