

Anti-Paxillin antibody (C-Term) (STJA0041329)

GENERAL INFORMATION

Product Type	Primary antibodies
Applications	ELISA/WB
Host / Source	Rabbit
Reactivity	Human/Mouse/Rat

PRODUCT PROPERTIES

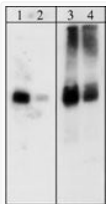
Clonality	Polyclonal
Conjugation	Unconjugated
Purification	Antigen Affinity Purified
Dilution Range	WB 1:1000
Formulation	PBS + 1 mg/ml BSA, 0.05% NaN3 and 50% glycerol
Isotype	IgG
Molecular Weight	68
Storage Instruction	Storage at -20°C is recommended, as aliquots may be taken without freeze/thawing due to presence of 50% glycerol. Stable for at least 1 year at -20°C.

TARGET INFORMATION

Gene ID	5829
Gene Symbol	PXN
UniProt ID	PAXI_HUMAN
Immunogen Region	C-Term
Immunogen Sequence	Human
Specificity	This antibody detects a 68kDa* protein corresponding to the molecular mass of paxillin on SDS-PAGE immunoblots of A431 cells.

ADDITIONAL INFORMATION

Note STRICTLY FOR FURTHER SCIENTIFIC RESEARCH USE ONLY (RUO). MUST NOT TO BE USED IN DIAGNOSTIC OR THERAPEUTIC APPLICATIONS.



Western blot A431 cells probed with rabbit polyclonal anti-Paxillin antibody STJA0041329