

## Anti-PKC antibody (499-697 aa) [M499] (STJA0041324)

### GENERAL INFORMATION

Product Type	Primary antibodies
Applications	ELISA/WB/ICC
Host / Source	Mouse
Reactivity	Chicken/Human/Mouse/Rat

### PRODUCT PROPERTIES

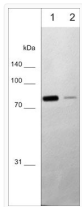
Clonality	Monoclonal
Conjugation	Unconjugated
Purification	Protein G Purified
Dilution Range	WB 1:1000 ICC 1:100
Formulation	PBS + 1 mg/ml BSA, 0.05% NaN <sub>3</sub> and 50% glycerol
Isotype	IgG2a
Molecular Weight	80-82
Storage Instruction	Storage at -20°C is recommended, as aliquots may be taken without freeze/thawing due to presence of 50% glycerol. Stable for at least 1 year at -20°C.

### TARGET INFORMATION

Gene ID	<a href="#">5582</a>
Gene Symbol	<a href="#">PRKCG</a>
UniProt ID	<a href="#">KPCG_HUMAN</a>
Immunogen Region	499-697 aa
Immunogen Sequence	Human
Specificity	This antibody detects 80-82kDa* proteins corresponding to the molecular mass of PKC Alpha, PKC Beta, and PKC Gamma on SDS-PAGE immunoblots of mouse brain lysates. Similar results were observed in human and mouse lysates. This antibody detects recombi

### ADDITIONAL INFORMATION

Note STRICTLY FOR FURTHER SCIENTIFIC RESEARCH USE ONLY (RUO). MUST NOT TO BE USED IN DIAGNOSTIC OR THERAPEUTIC APPLICATIONS.



Western blot WB PKC isoforms in mouse brain lysate using antibody at two dilutions STJA0041324