

Anti-PD-L1 antibody (ECD) [M051] (STJA0041305)

GENERAL INFORMATION

Product Type	Primary antibodies
Applications	ELISA/WB/ICC/IP
Host / Source	Mouse
Reactivity	Human

PRODUCT PROPERTIES

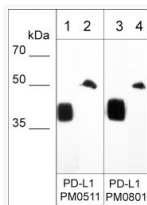
Clonality	Monoclonal
Conjugation	Unconjugated
Purification	Protein G Purified
Dilution Range	WB 1:1000 ICC 1:200 IP 1:200
Formulation	PBS + 1 mg/ml BSA, 0.05% Na ₃ N and 50% glycerol
Isotype	IgG1
Molecular Weight	45-55
Storage Instruction	Storage at -20°C is recommended, as aliquots may be taken without freeze/thawing due to presence of 50% glycerol. Stable for at least 1 year at -20°C.

TARGET INFORMATION

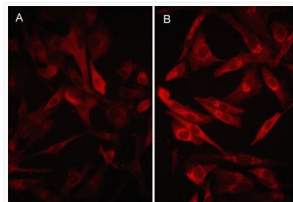
Gene ID	29126
Gene Symbol	CD274
UniProt ID	PD1L1_HUMAN
Immunogen Region	ECD
Immunogen Sequence	Human
Specificity	Clone M051 mouse monoclonal antibody detects a 45-55 kDa* protein on SDS-PAGE Native [®] or denatured immunoblots of human recombinant PD-L1 extracellular region, and human lung tissue. The antibody works for western blot, immunoprecipitation, immunocyto

ADDITIONAL INFORMATION

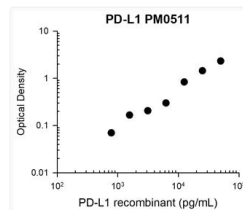
Note STRICTLY FOR FURTHER SCIENTIFIC RESEARCH USE ONLY (RUO). MUST NOT TO BE USED IN DIAGNOSTIC OR THERAPEUTIC APPLICATIONS.



Western blot anti-PD-L1 antibody detection in recombinant PD-L1 and human lung tissue STJA0041305



ICC staining PD-L1 in MDA-MB-231 cells using antibody with DyLight 594 detection STJA0041305



ELISA standard curve for anti-PD-L1 antibody capturing human recombinant PD-L1 STJA0041305