

## Anti-Phospho-Myosin IIA Heavy Chain, phospho-specific-Ser-1916 antibody (STJA0041284)

### GENERAL INFORMATION

Product Type	Primary antibodies
Applications	ELISA/WB
Host / Source	Rabbit
Reactivity	Chicken/Human/Mouse/Rat

### PRODUCT PROPERTIES

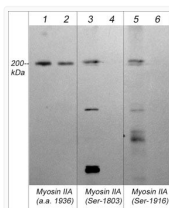
Clonality	Polyclonal
Conjugation	Unconjugated
Purification	Antigen Affinity Purified
Dilution Range	WB 1:1000
Formulation	PBS + 1 mg/ml BSA, 0.05% NaN3 and 50% glycerol
Isotype	IgG
Molecular Weight	200
Storage Instruction	Storage at -20°C is recommended, as aliquots may be taken without freeze/thawing due to presence of 50% glycerol. Stable for at least 1 year at -20°C.

### TARGET INFORMATION

Gene ID	<a href="#">4627</a>
Gene Symbol	<a href="#">MYH9</a>
UniProt ID	<a href="#">MYH9_HUMAN</a>
Immunogen Sequence	Human
Specificity	This antibody was cross-adsorbed to unphosphorylated Myosin IIA Heavy Chain (Ser-1916) peptide before affinity purification using phospho-Myosin IIA Heavy Chain (Ser-1916) peptide (without carrier). The antibody detects a 200 kDa* protein correspondi

### ADDITIONAL INFORMATION

Note STRICTLY FOR FURTHER SCIENTIFIC RESEARCH USE ONLY (RUO). MUST NOT TO BE USED IN DIAGNOSTIC OR THERAPEUTIC APPLICATIONS.



Western blot Myosin IIA Heavy Chain phospho-specific antibody detection in A431 cells  
 STJA0041284