

Anti-Phospho-Myosin IIA Heavy Chain, phospho-specific-Ser-1803 antibody (STJA0041283)

GENERAL INFORMATION

Product Type	Primary antibodies
Applications	ELISA/WB
Host / Source	Rabbit
Reactivity	Chicken/Human/Mouse/Rat

PRODUCT PROPERTIES

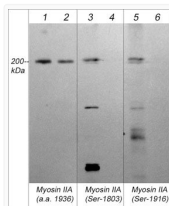
Clonality	Polyclonal
Conjugation	Unconjugated
Purification	Antigen Affinity Purified
Dilution Range	WB 1:1000
Formulation	PBS + 1 mg/ml BSA, 0.05% NaN3 and 50% glycerol
Isotype	IgG
Molecular Weight	200
Storage Instruction	Storage at -20°C is recommended, as aliquots may be taken without freeze/thawing due to presence of 50% glycerol. Stable for at least 1 year at -20°C.

TARGET INFORMATION

Gene ID	4627
Gene Symbol	MYH9
UniProt ID	MYH9_HUMAN
Immunogen Sequence	Human
Specificity	This antibody was cross-adsorbed to unphosphorylated Myosin IIA Heavy Chain (Ser-1803) peptide before affinity purification using phospho-Myosin IIA Heavy Chain (Ser-1803) peptide (without carrier). The antibody detects a 200 kDa* protein correspondi

ADDITIONAL INFORMATION

Note STRICTLY FOR FURTHER SCIENTIFIC RESEARCH USE ONLY (RUO). MUST NOT TO BE USED IN DIAGNOSTIC OR THERAPEUTIC APPLICATIONS.



Western blot Myosin IIA Heavy Chain phospho-specific antibody detection in A431 cells
 STJA0041283