

Anti-Phospho-MeCP2-Ser-80 antibody (STJA0041281)

GENERAL INFORMATION

Product Type	Primary antibodies
Applications	ELISA/WB/ICC/IHC
Host / Source	Rabbit
Reactivity	Human/Mouse/Rat

PRODUCT PROPERTIES

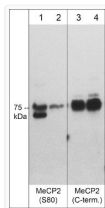
Clonality	Polyclonal
Conjugation	Unconjugated
Purification	Antigen Affinity Purified
Dilution Range	WB 1:1000 IHC 1:100 ICC 1:250
Formulation	PBS + 1 mg/ml BSA, 0.05% NaN ₃ and 50% glycerol
Isotype	IgG
Molecular Weight	75
Storage Instruction	Storage at -20°C is recommended, as aliquots may be taken without freeze/thawing due to presence of 50% glycerol. Stable for at least 1 year at -20°C.

TARGET INFORMATION

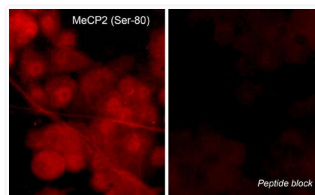
Gene ID	17257
Gene Symbol	Mecp2
UniProt ID	MECP2_MOUSE
Immunogen Sequence	Mouse
Specificity	The antibody detects a 75 kDa* protein corresponding to the molecular mass of MeCP2 on SDS-PAGE immunoblots of human PC3 cells treated with calyculin A and in mouse brain tissue. These reactivities are not observed after lambda phosphatase treatment.

ADDITIONAL INFORMATION

Note STRICTLY FOR FURTHER SCIENTIFIC RESEARCH USE ONLY (RUO). MUST NOT TO BE USED IN DIAGNOSTIC OR THERAPEUTIC APPLICATIONS.



Western blot MeCP2 detection in mouse brain tissue with phosphatase treatment comparison STJA0041281



ICC staining MeCP2 phosphorylation in rat PC12 cells using antibody with blocking peptide control STJA0041281