

Anti-Myosin 13/Extraocular Myosin antibody (Hinge Region) (STJA0041279)

GENERAL INFORMATION

Product Type	Primary antibodies
Applications	ELISA/WB/IHC
Host / Source	Rabbit
Reactivity	Human/Mouse/Rat

PRODUCT PROPERTIES

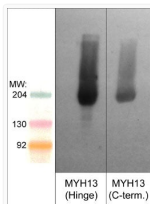
Clonality	Polyclonal
Conjugation	Unconjugated
Purification	Antigen Affinity Purified
Dilution Range	WB 1:1000 IHC 1:150
Formulation	PBS + 1 mg/ml BSA, 0.05% NaN ₃ and 50% glycerol
Isotype	IgG
Molecular Weight	215
Storage Instruction	Storage at -20°C is recommended, as aliquots may be taken without freeze/thawing due to presence of 50% glycerol. Stable for at least 1 year at -20°C.

TARGET INFORMATION

Immunogen Region	Hinge Region
Immunogen Sequence	Mouse
Specificity	The antibody detects a 215 kDa* protein corresponding to the apparent molecular mass of MYH13 on SDS-PAGE immunoblots of mouse extraocular muscle, and does not detect MYHs in mouse diaphragm, gastrocnemius, or brain.

ADDITIONAL INFORMATION

Note STRICTLY FOR FURTHER SCIENTIFIC RESEARCH USE ONLY (RUO). MUST NOT TO BE USED IN DIAGNOSTIC OR THERAPEUTIC APPLICATIONS.



Western blot MYH13 in mouse extraocular muscle using antibody STJA0041279